

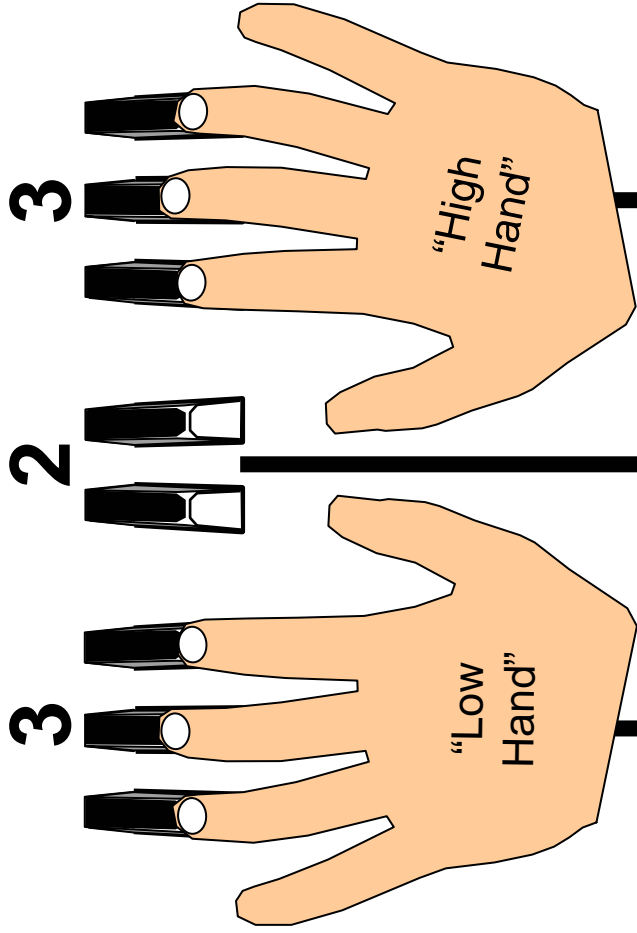
# Just Black Threes

February 2023

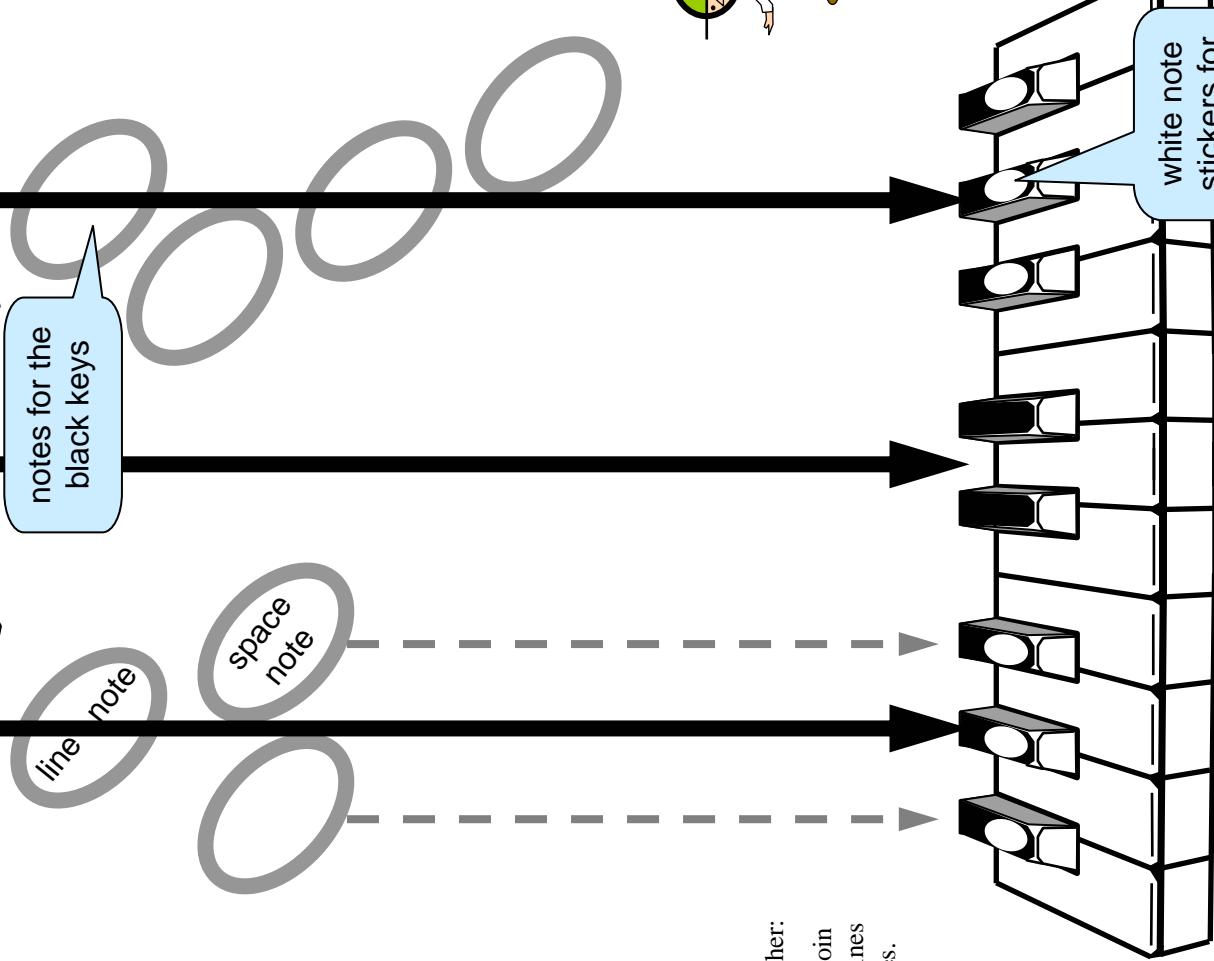
# Hand Placement for 3s



Ground



Sky



notes for the black keys

line note

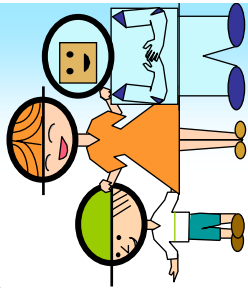
space note

white note stickers for black keys

Student sits in the center.

**T**

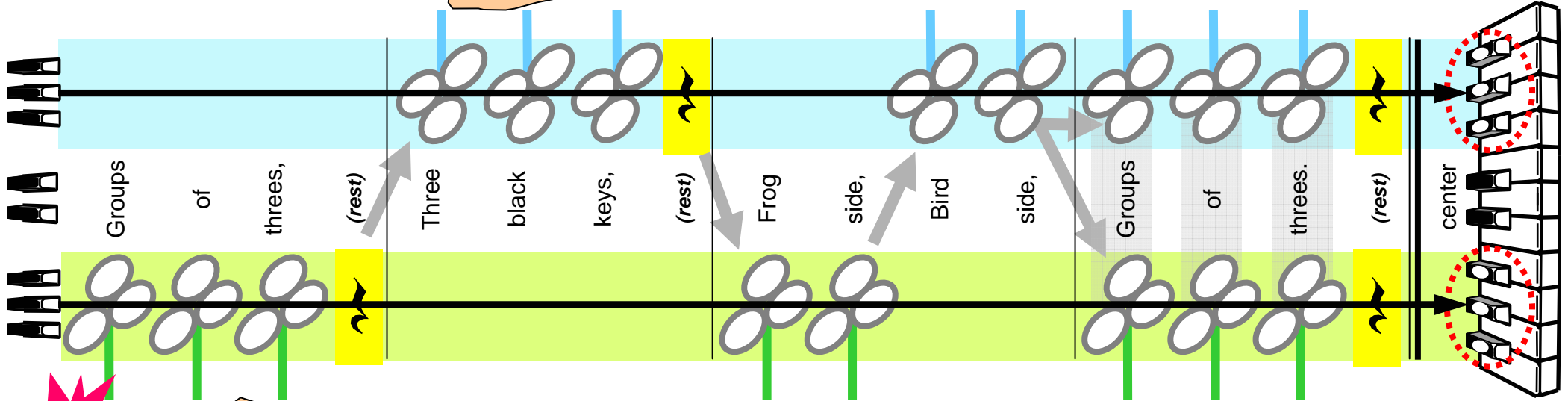
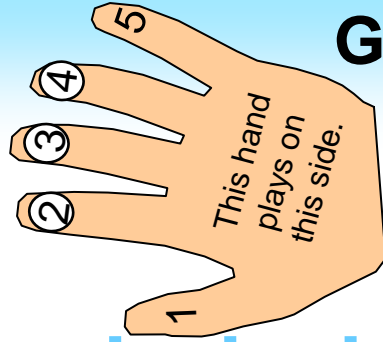
Note to teacher:  
Move a counter or coin across the 3-group lines to represent the notes.



Kids' notes:  
- for playing the black keys.

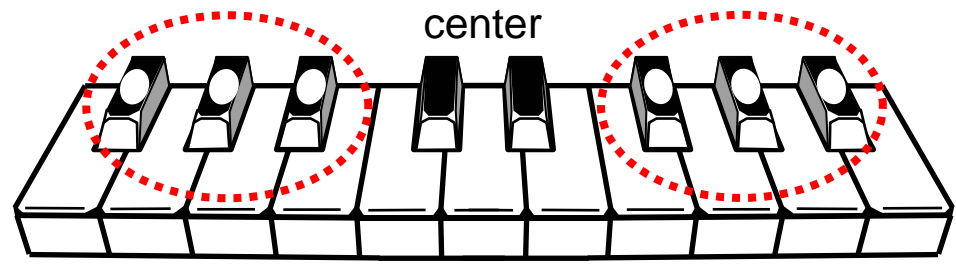
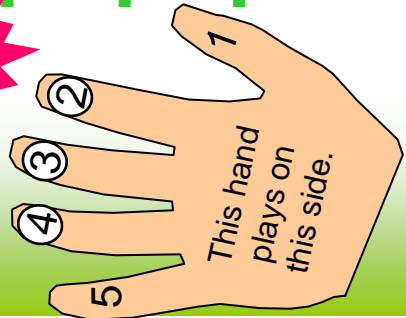
# Groups of Three

(sky)



high side

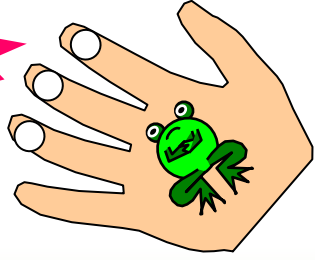
low side



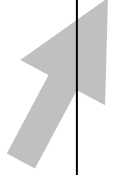
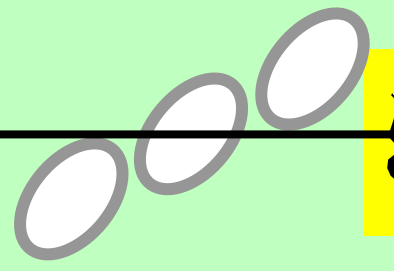
(ground)



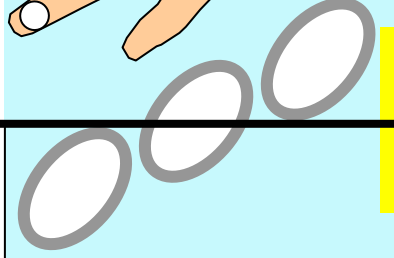
# Copy Cat



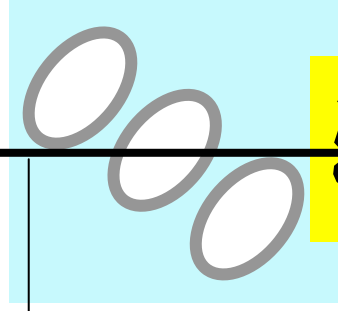
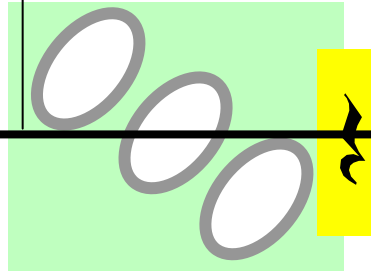
Copy this



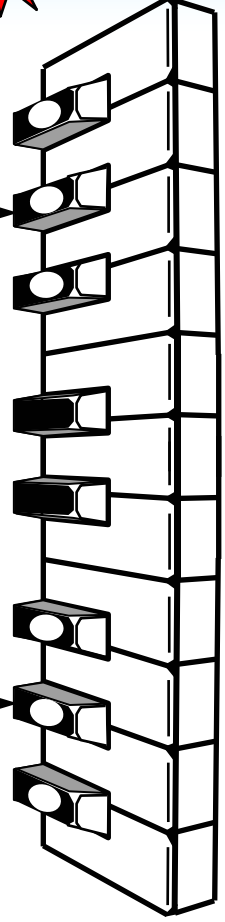
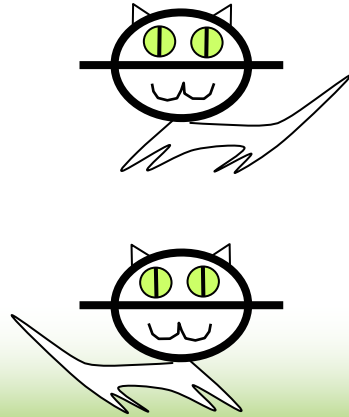
Copy that



Copy this

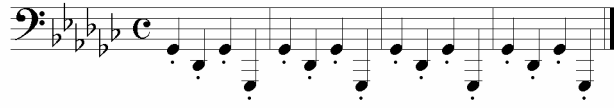


Copy cat!



centre of keyboard

Teacher's Accompaniment:



# Right on Line or Next to Line

Play **this** side first.

Right on line or next to line. Which side do we go this time?

1 2 3 4

centre of keyboard

high side

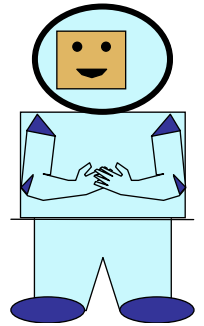
# Call It Space

Next to lines we call it space. Notes can go in either place.

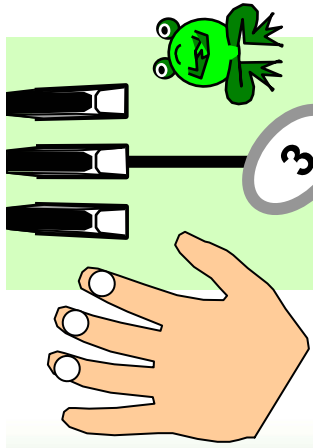
centre of keyboard

low side

Trace and draw **space** and **line** notes,

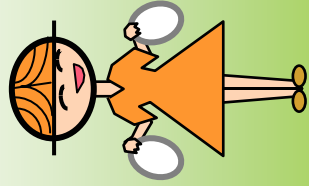
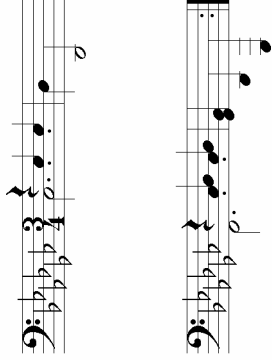


# Every White Note

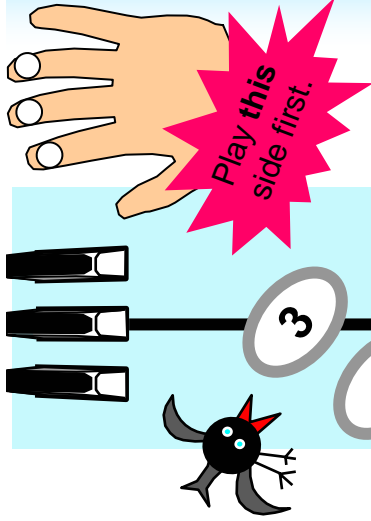


That way they'll be

Teacher's Accompaniment:



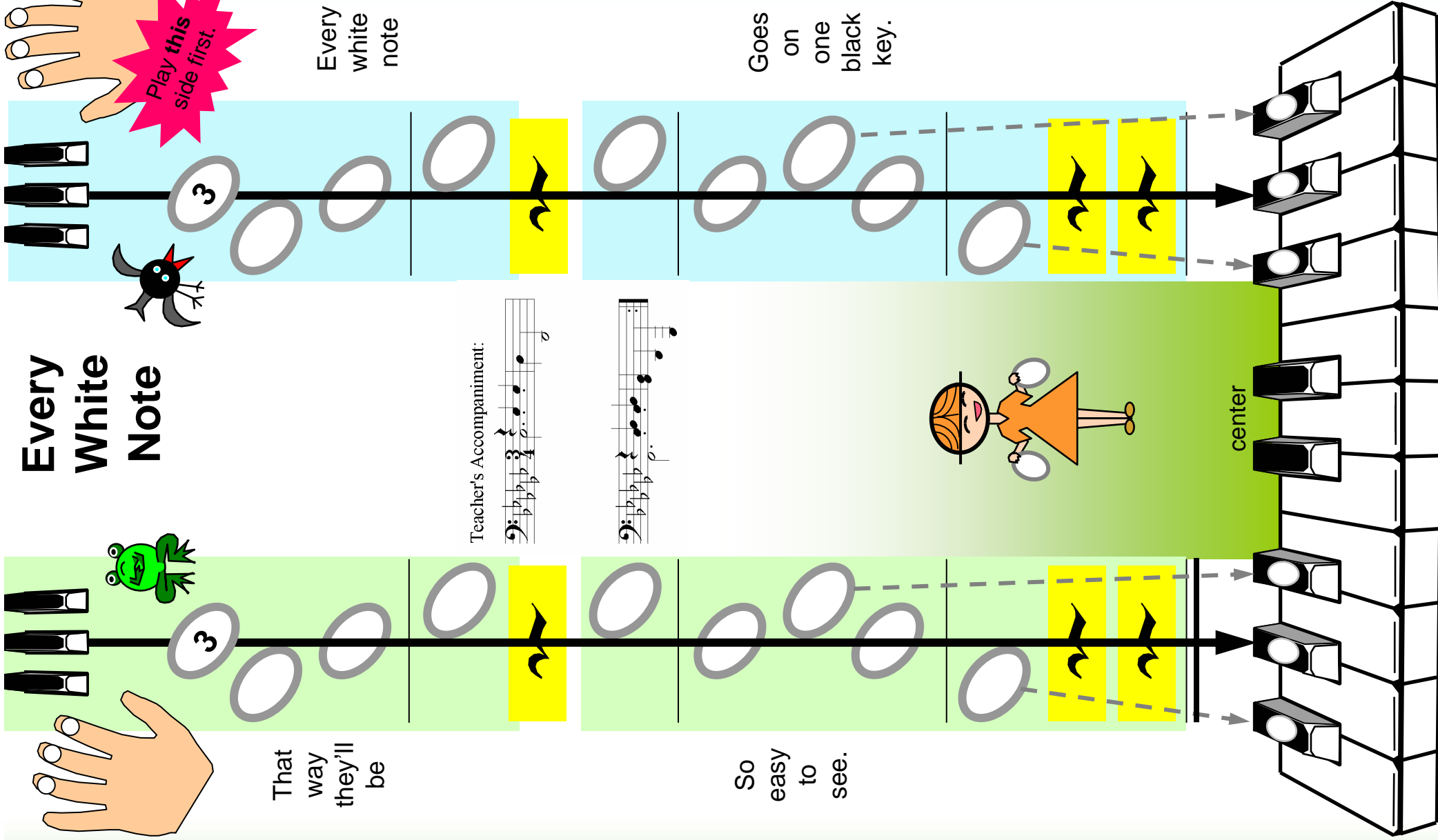
center



Play this side first.

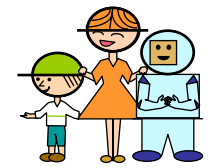
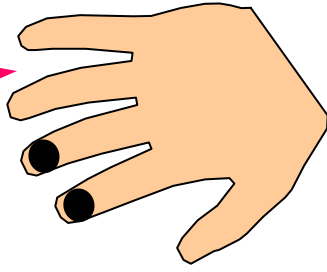
Every white note

Goes on one black key.



# Smoothly Step on Naturals

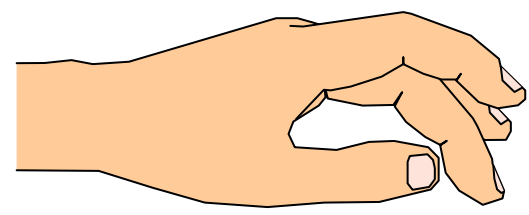
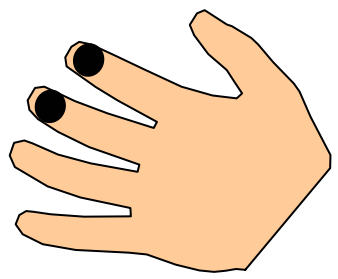
Play this side first



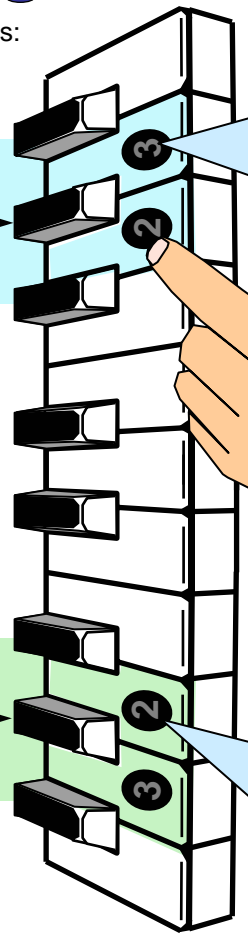
Kids' notes:

Smooth-ly step on nat - ural keys. (rest) Hop and skip in - side of threes. (rest)

Step like fin - gers are your feet. (rest) Hop and skip with stead - y beat. (rest)



Teacher's Accompaniment:



Black note stickers are for the naturals.

Double natural keys inside threes.

# Smoothly Step on Threes

Play this side first.

Smooth - ly step on group of three. Cling on till each next - door key.

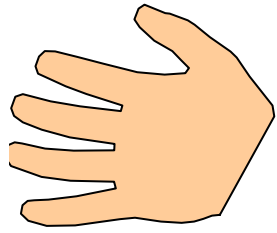
The diagram illustrates a sequence of steps on a horizontal line. A hand with a bat on its palm is positioned at the start of the line. A keyboard is shown at the end of the line, with an arrow pointing to the 'centre of keyboard'. The line is divided into two sections by a vertical line. The first section contains three ovals, and the second section contains three ovals. A grey box labeled 'Cling on!' is positioned between the two sections. A yellow box with a bat icon is at the end of the line. A black arrow points from the end of the line to the keyboard.

# Step From Line to Space

Step from line to space next - door. Step with fin - gers 2 3 4.

The diagram illustrates a sequence of steps from a line to a space. A hand with a frog on its palm is positioned at the start of the line. A keyboard is shown at the end of the line, with an arrow pointing to the 'centre of keyboard'. The line is divided into two sections by a vertical line. The first section contains three ovals, and the second section contains three ovals. A grey box labeled 'Cling on!' is positioned between the two sections. A yellow box with a frog icon is at the end of the line. A black arrow points from the end of the line to the keyboard.



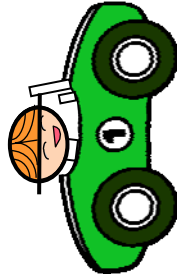
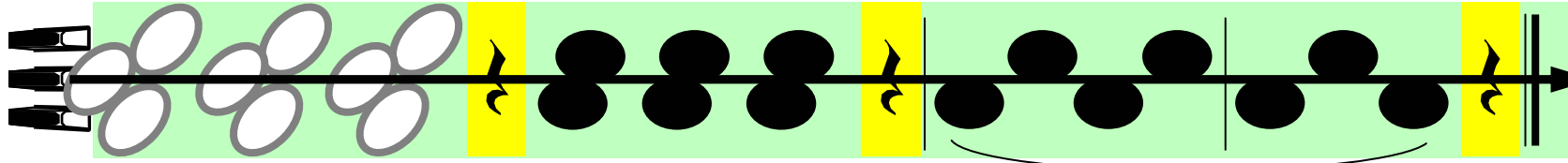


Rac-ing  
car,

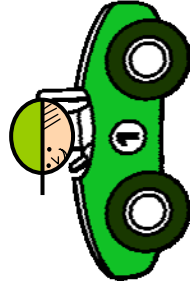
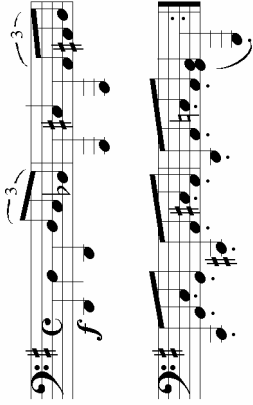
(get  
ready)

Hop  
right in.

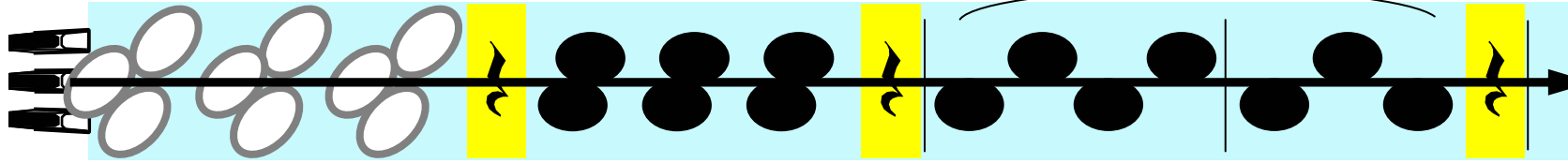
Let me  
take you  
for a  
spin.



Teacher's Accompaniment:



# Racing Car

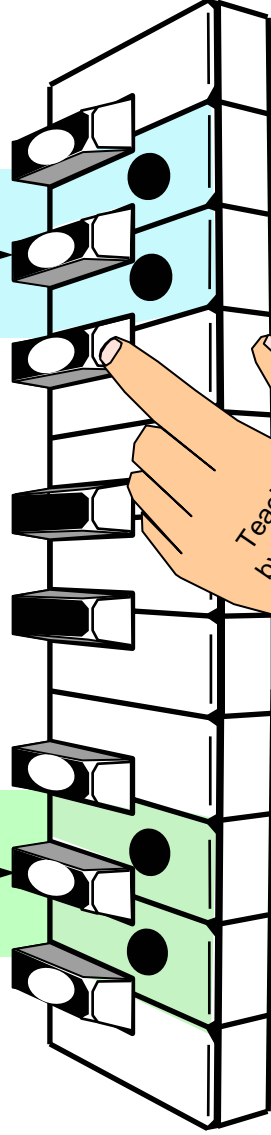
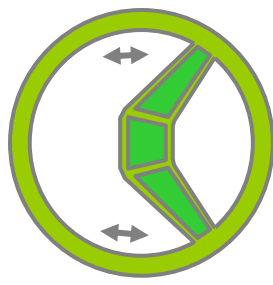


Rac-ing  
car,

(get  
ready)

Hop  
in-side.

Let me  
take you  
for a  
ride.



"double  
natural  
keys"

Teach  
by rote!

"double  
natural  
keys"

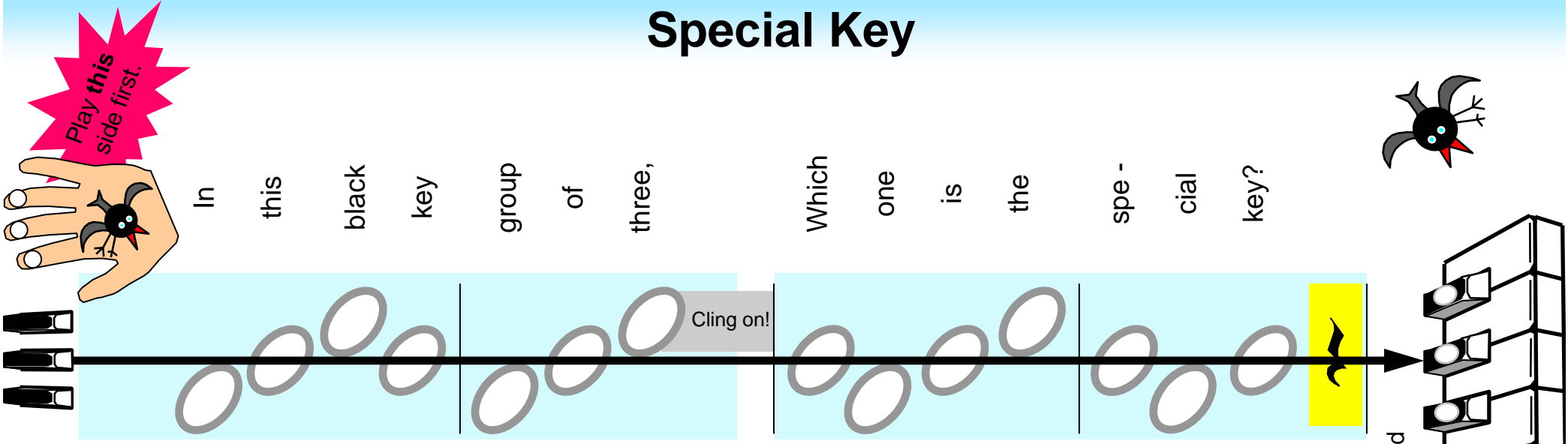
Play this  
side first

# Special Key

Play this side first.

In this black key group of three, Which one is the special key?

Cling on!

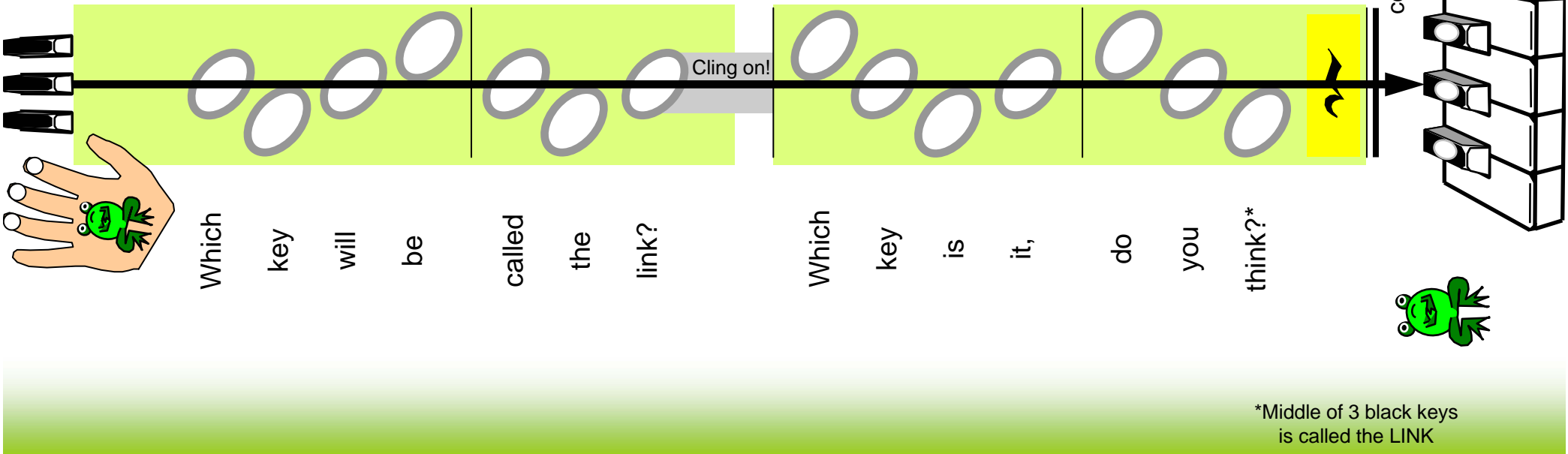


# Called the Link

Which key will be called the link? Which key is it, do you think?\*

Cling on!


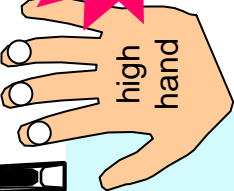
centre of keyboard



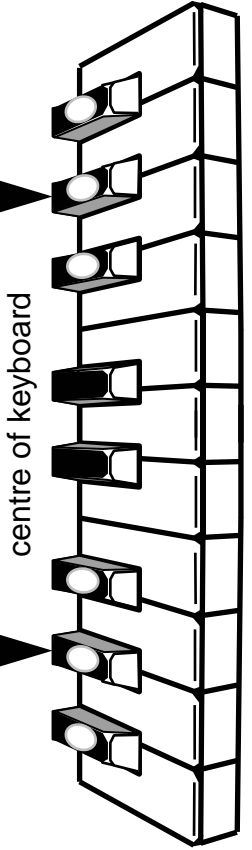
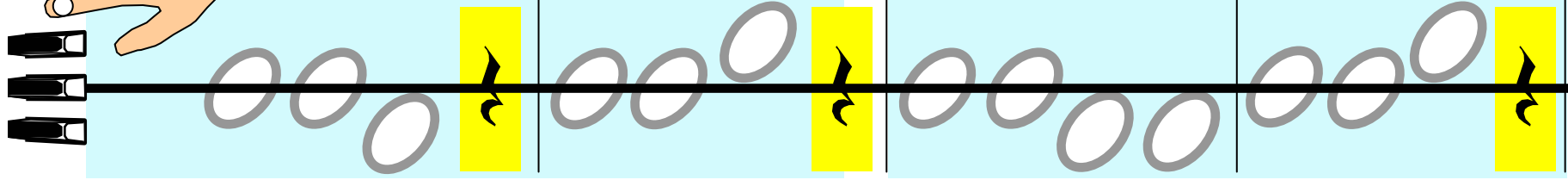
\*Middle of 3 black keys is called the LINK

# Line to Space

Play **this** side first.



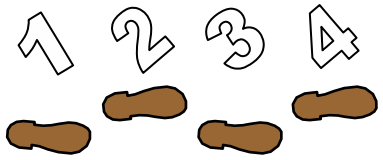


Line to space. (rest) Line to space. (rest) Fin - gers march with stea - dy pace.

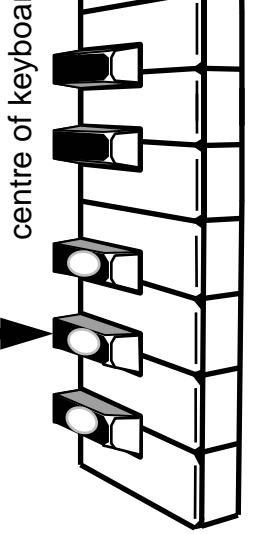
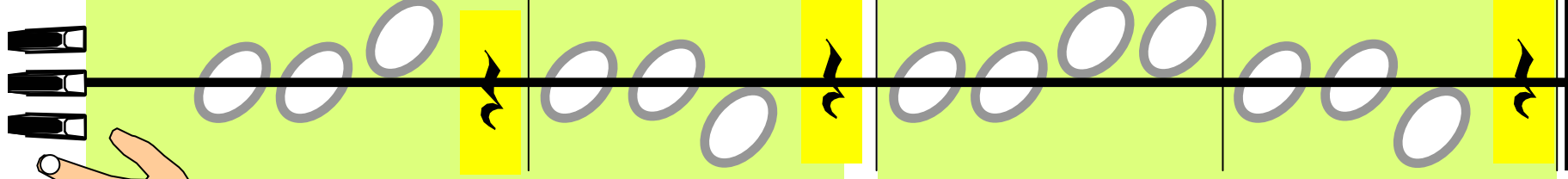


high side


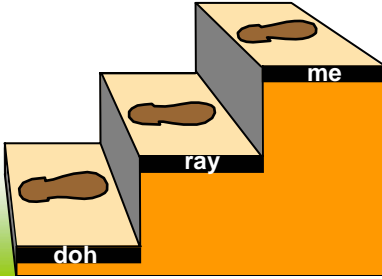
# Called One Step



Line to space. (rest) Called one step. (rest) Next door fin - gers don't for - get.



low side

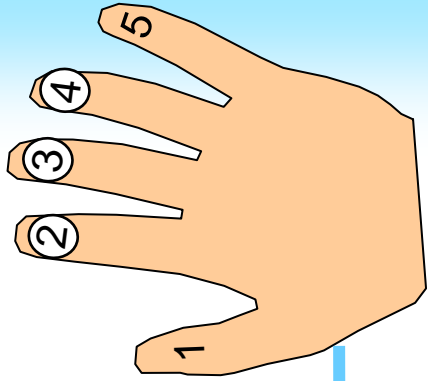


# Groups of Three

sky



high side



Groups of three, (rest) High and low. (rest) Doh ray me, (rest) Me ray doh. (rest) center

The musical staff is divided into two sections: a top section with a light blue background and a bottom section with a light green background. The top section contains notes on a treble clef staff, and the bottom section contains notes on a bass clef staff. Lyrics are written below the notes. Rests are indicated by a yellow box with a bird icon. A keyboard is shown on the right side of the staff, with a red dashed circle around the center keys.

Verse 2:

Groups of three, Three black keys.  
Step-ping up, Step down please.

up

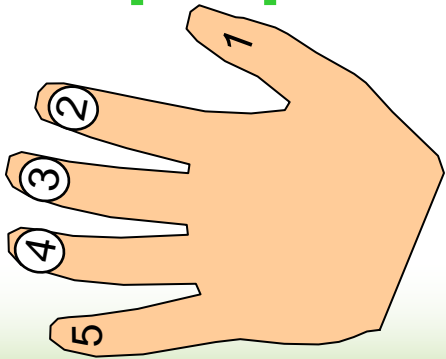


down



ground

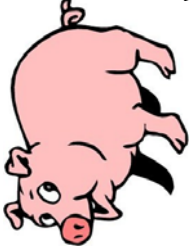
low side



# Three Little Piglets

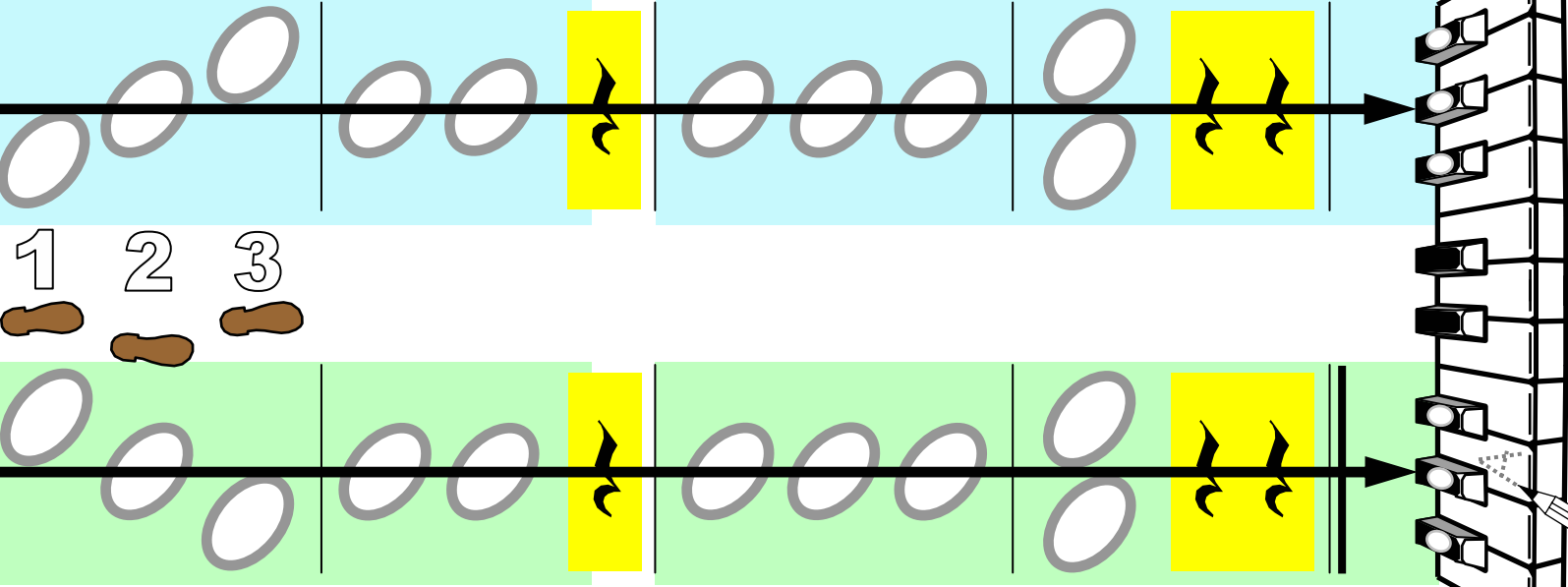


Play this side first.



"Pig in the Mid - dle" That's this game's name.

Three lit - tle pig - lets, Play - ing this game.



1 2 3

(Both hands together, fingers the same.)



centre of keyboard

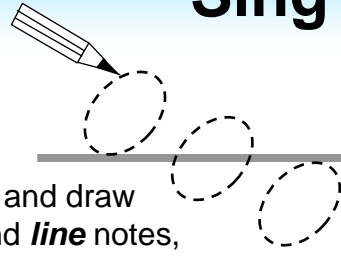
# Sing Up High



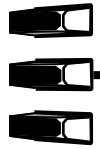
Play this side first.



Trace and draw *space* and *line* notes,



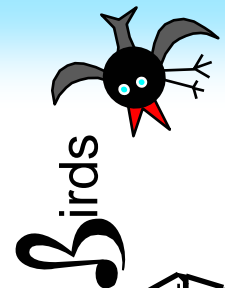
Birds



Sing up high,

Sing up high.

Sing up high where black birds fly.



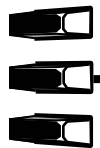
Birds

# Sing Down Low

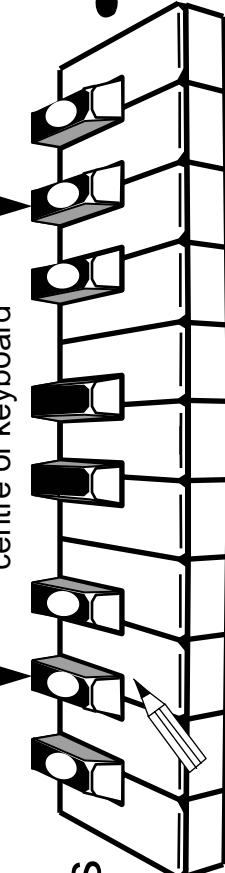
Sing down low,

Sing down low.

Sing down low where bull - frogs go.

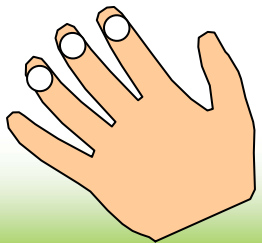


centre of keyboard

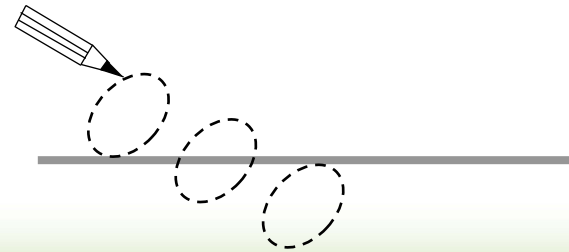


Write in the naturals letter names.

Frogs



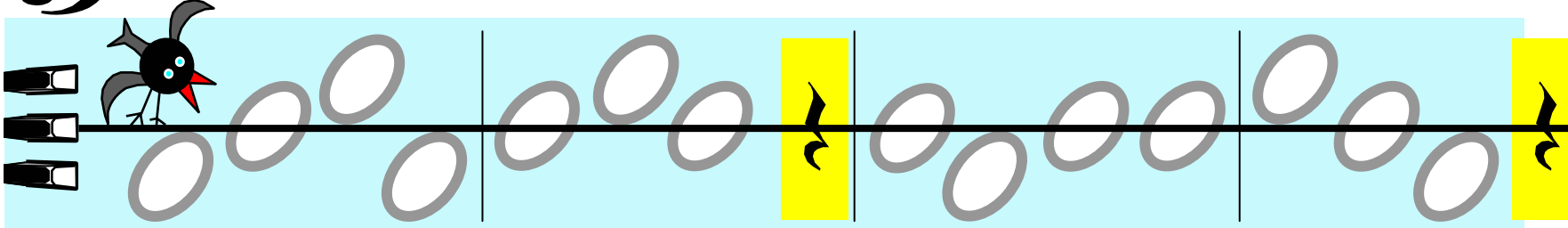
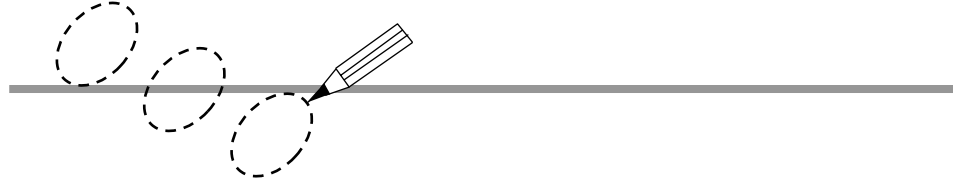
Teacher's Accompaniment:



Frogs

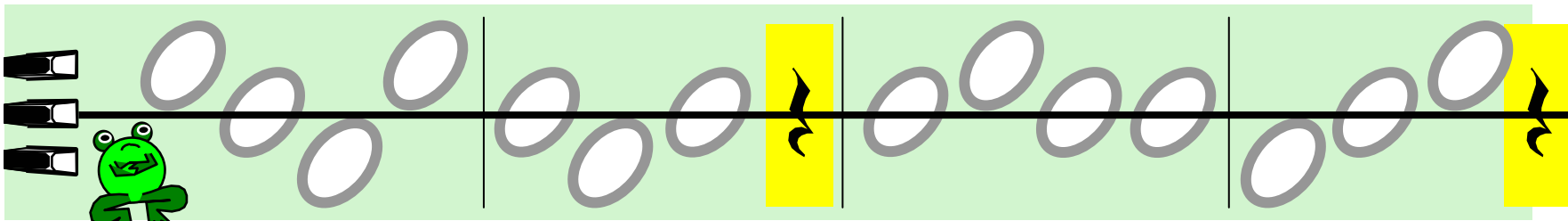


# 3 Black Birds



Three black birds cling to this line. One feels cross but two feel fine.

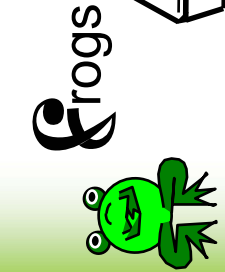
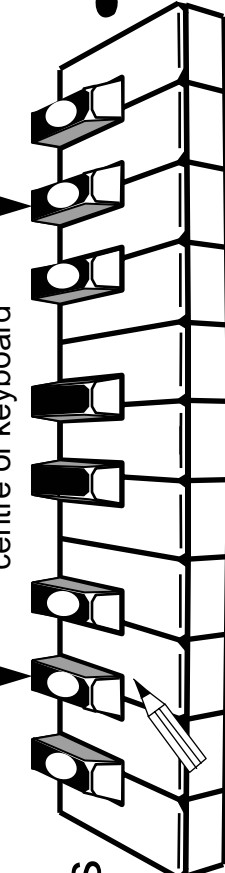
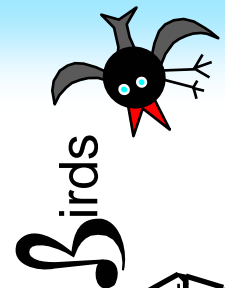
# 3 Black Frogs



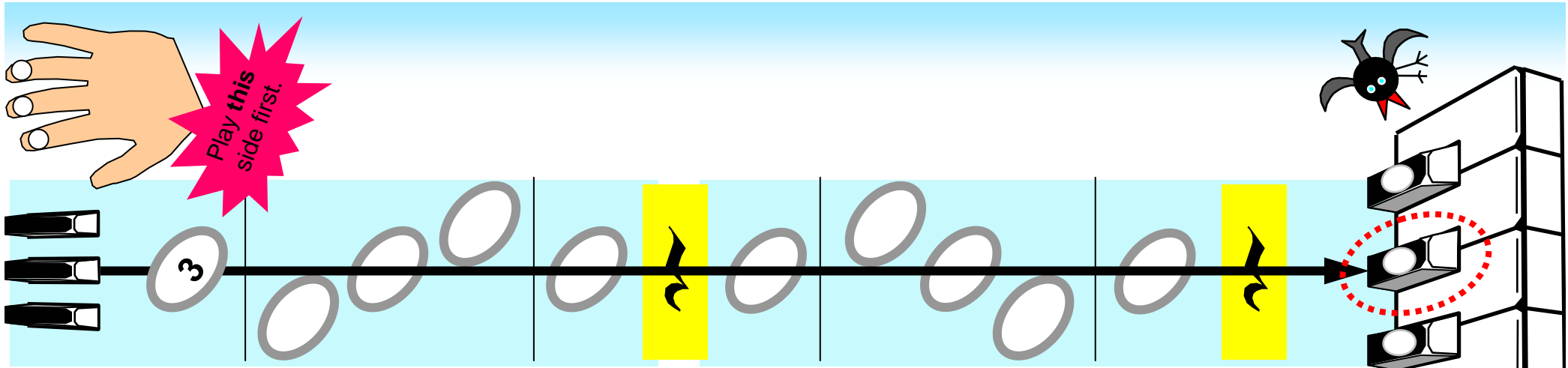
Three black frogs are friends of mine. One acts bos - sy all the time.



Trace and draw notes **crossing** or **touching** the line.



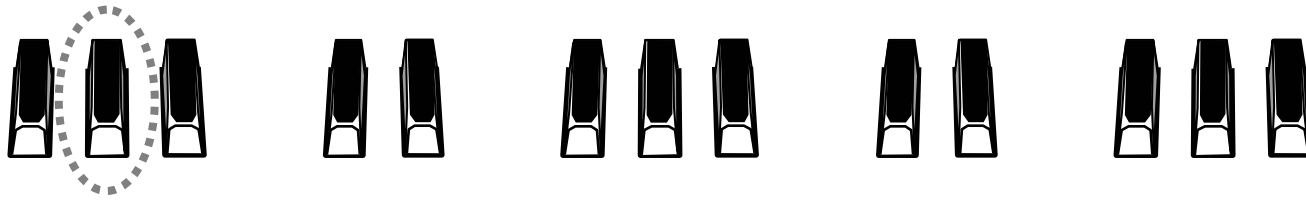
Write in the naturals letter names.



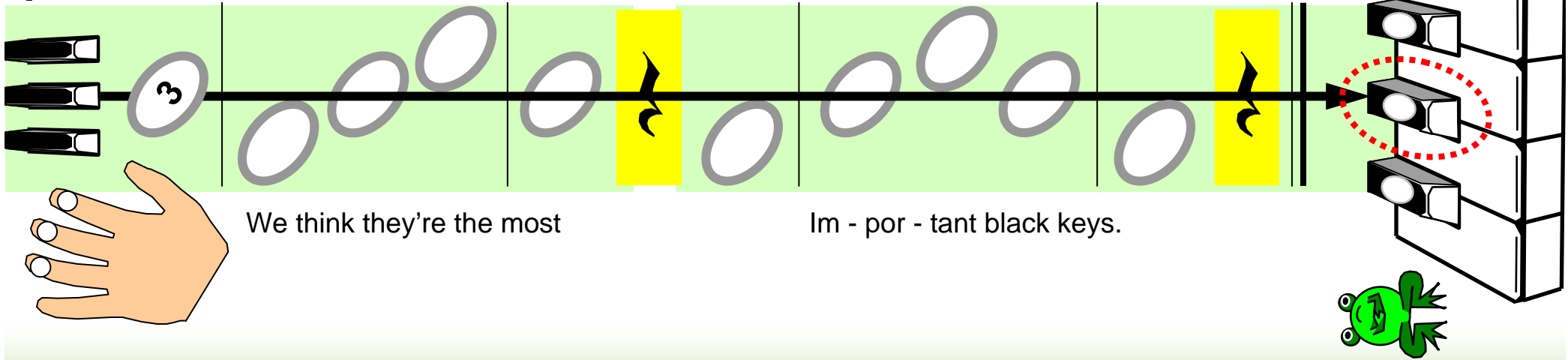
**These Black Key Called LINKS**

These black key called LINKS,

The mid - dle of threes,



center



We think they're the most

Im - por - tant black keys.



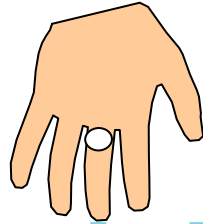
# Low Side, High Side



(1st verse)

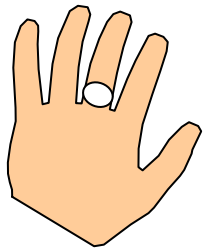
Low  
side,  
ground  
side,

1 2 3 4



High  
side,  
Sky  
side,

1 2 3 4



Both  
to -  
ge -  
ther,

High  
Count  
and  
it

High  
and  
Low.



Frogs

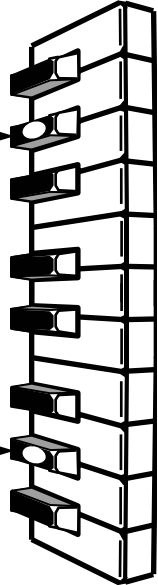


Birds

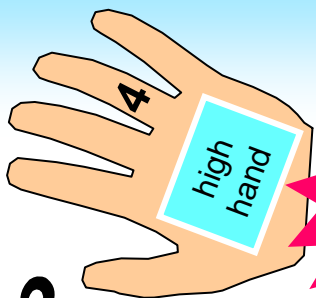
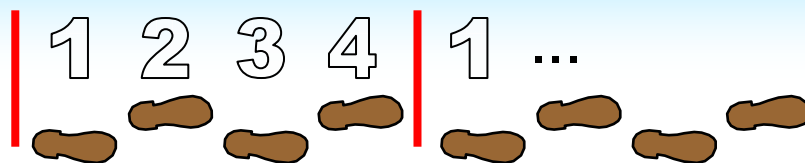
Sky (high)

Ground (low)

rest Repeat

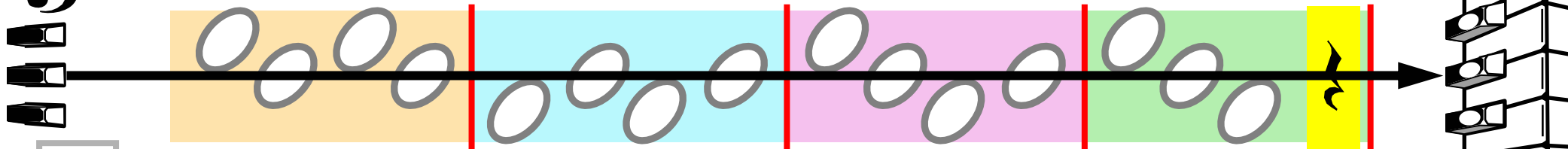


# Count to 4



Count to four in every colour, count to four in every bar.

Birds

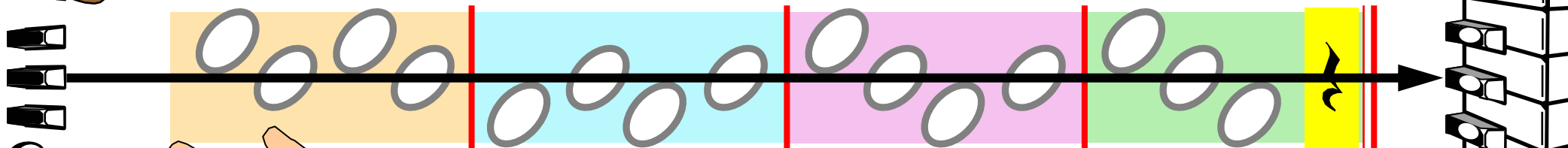


Teacher's Accompaniment:

4



1 2 3 4

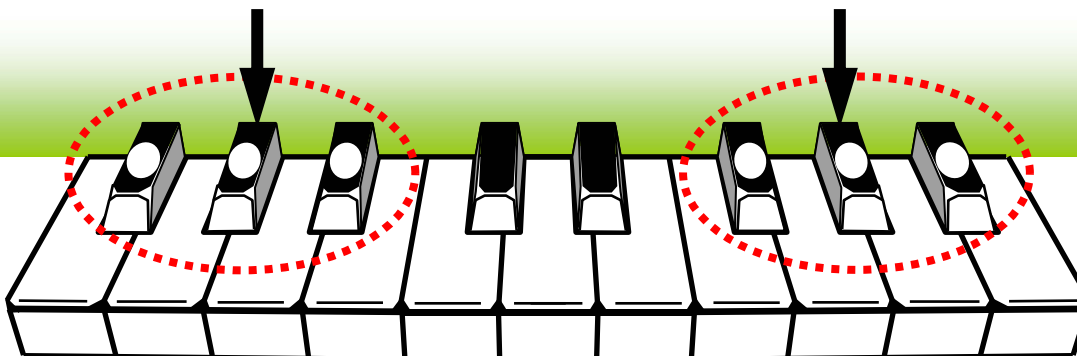


Frogs

Start from 1 at every bar-line, 1 2 3 4, Here we are.



Frog side



Bird side



# Short and Long Notes

Notes are short or notes are long. One beat long or two beats.

How long will each note cling on? One beat long or two beats.

high hand

low hand

4

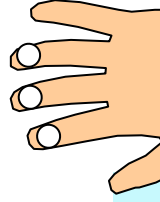
1 2 3 4

Teacher's Accompaniment:

Frogs

Birds

# Every Day



Play this side first.

Every day we play black thirds,

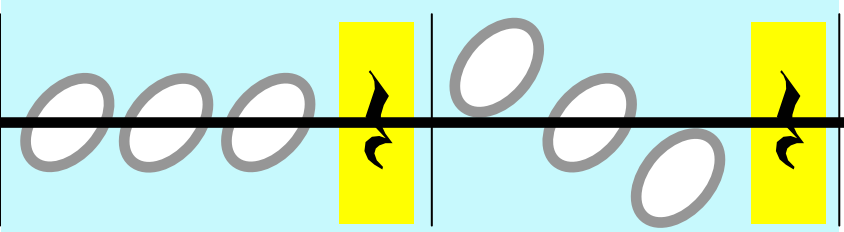
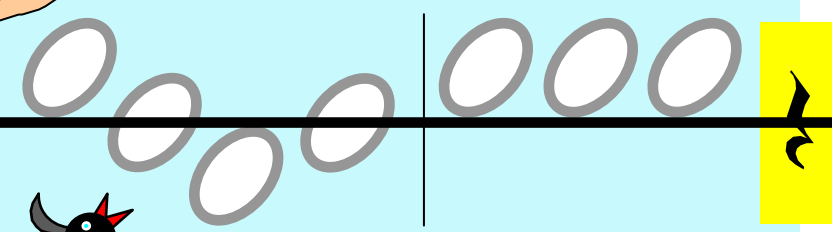
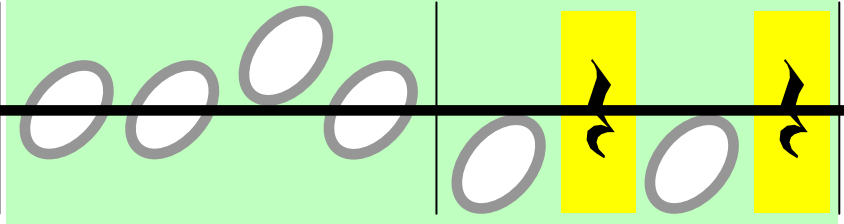
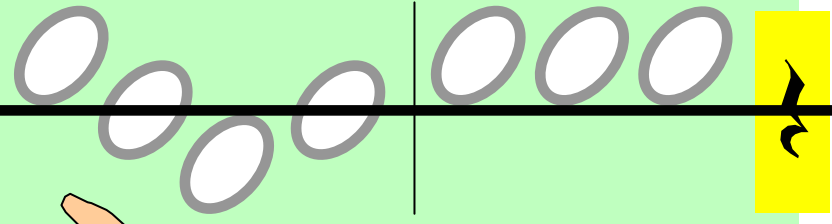
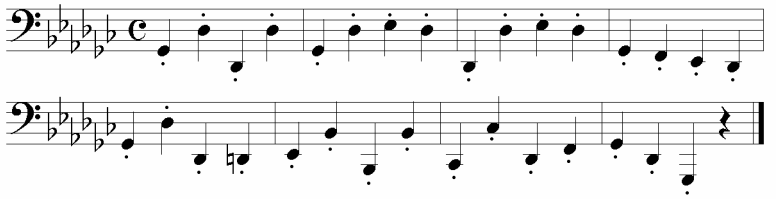
Every day we play these keys,

On the piano keyboard.

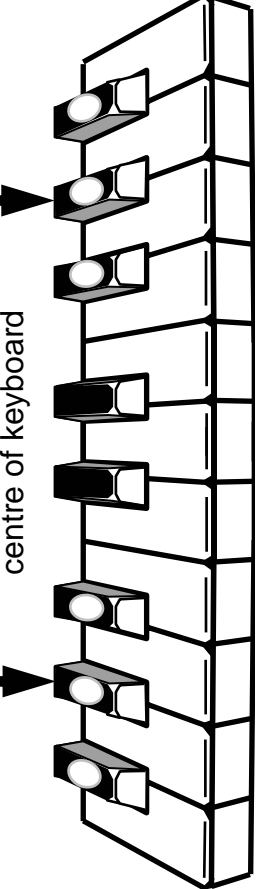
Play these keys,

Play these keys.

Teacher's Accompaniment:



centre of keyboard



# Line to Space

Play **this** side first.



Line note goes to high side space.

Line note goes to low side space.

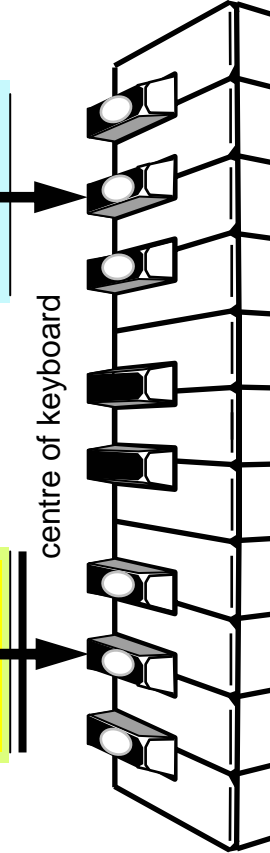
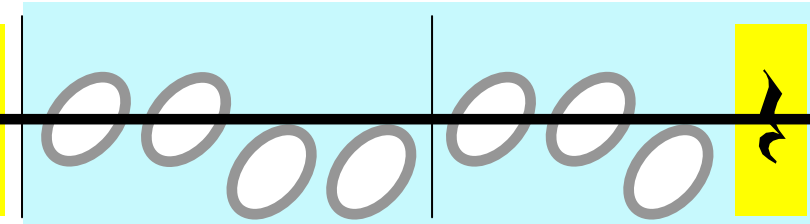
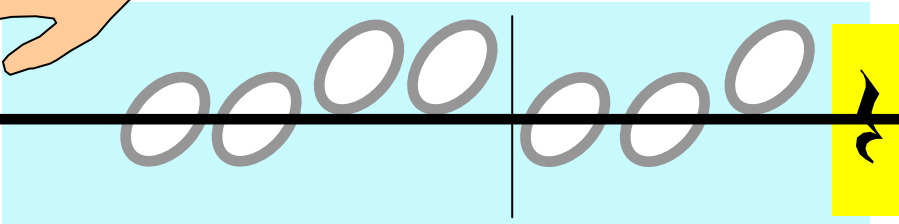
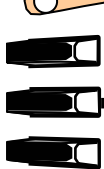
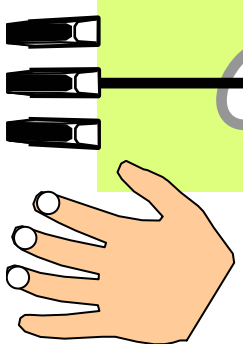
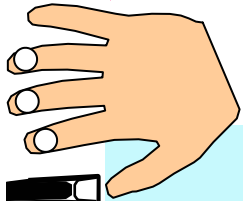


# Stepping Up and Down

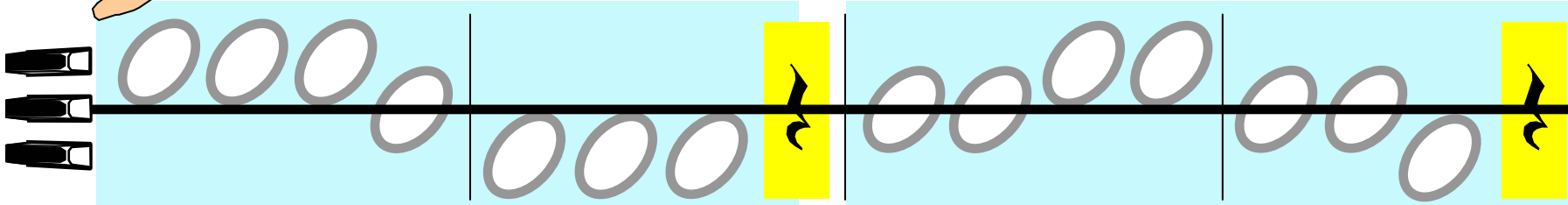
Step - ping up and step - ping down.

To the sky and to the ground.

centre of keyboard



# Up Above or Down Below

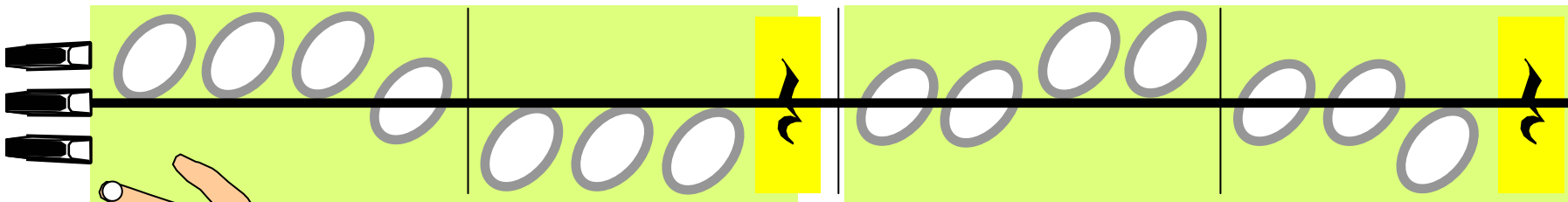


Up a - bove or down be - low.

Fol - low ev - 'ry - where I go.

O - ver line or un - der line.

See which key to play each time.

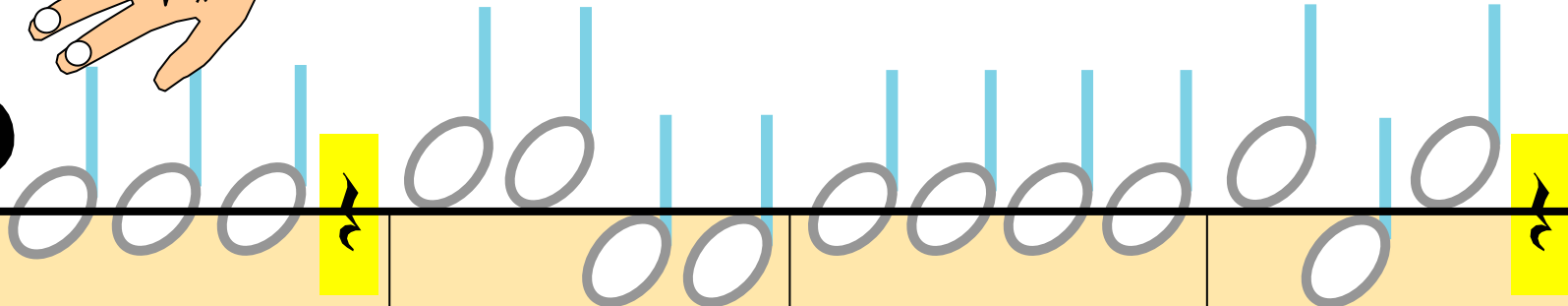
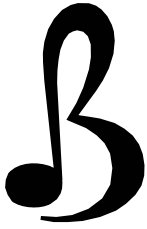


centre of keyboard



# Skip Across

'Bird Clef' =  
high side.



Three for birds,

This side, that side.

Play on line then

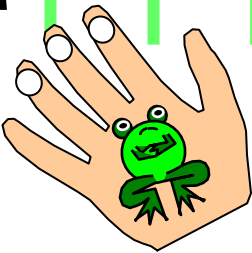
skip a - cross.

Three for frogs,

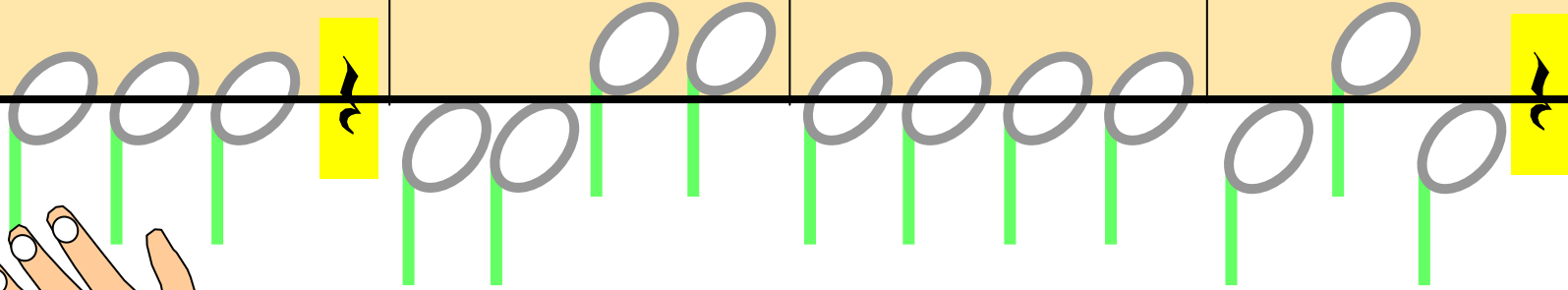
This side, that side.

Play in time and

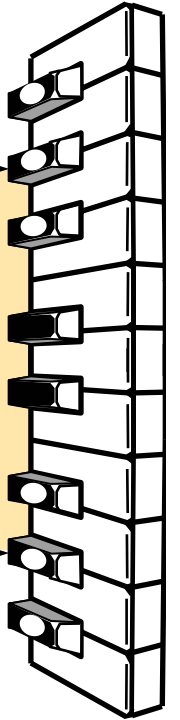
don't get lost.



'Frog Clef' =  
low side



centre of keyboard

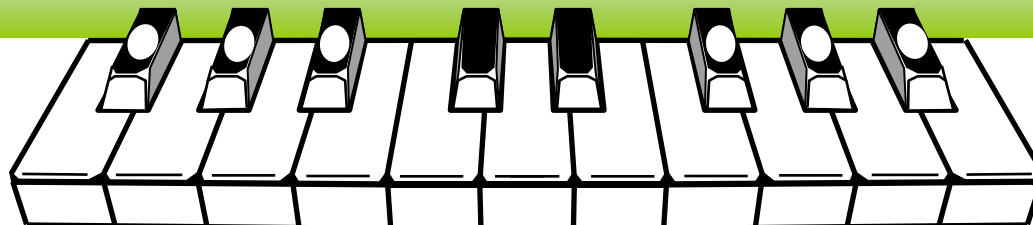


Low keys, left side



High keys, right side

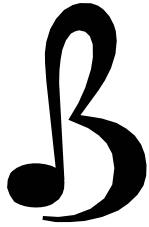
Frogs



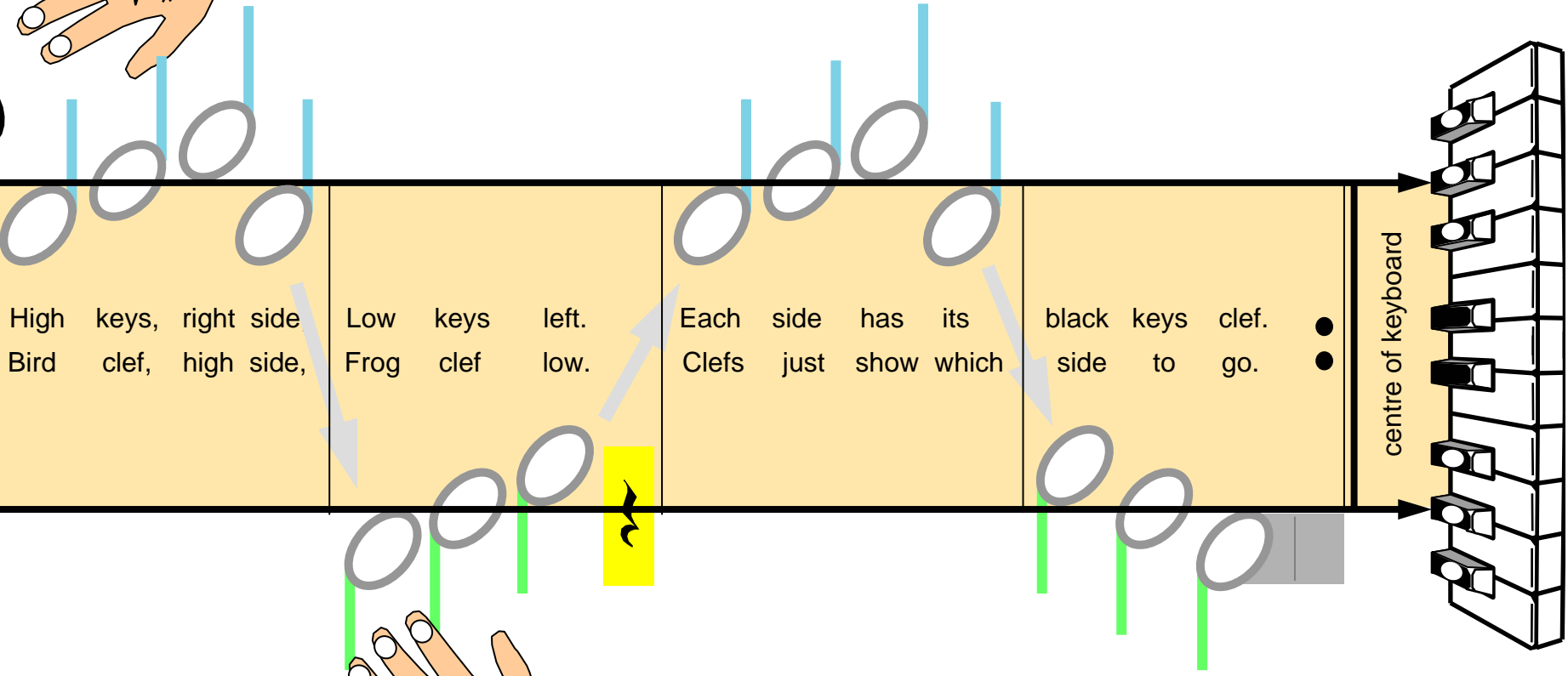
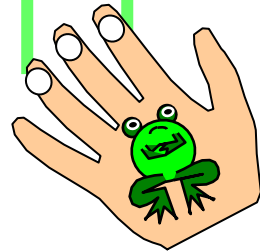
Birds

# Black Keys Clefs

'Bird Clef' =  
high side.



'Frog Clef' =  
low side

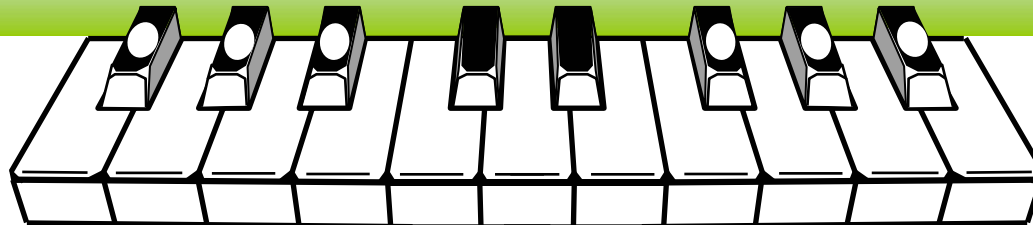


Low keys, left side

High keys, right side



Frogs



Birds

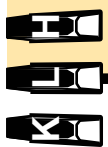
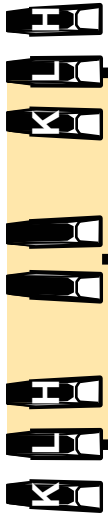
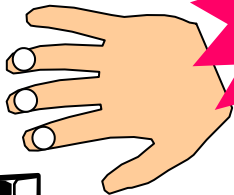




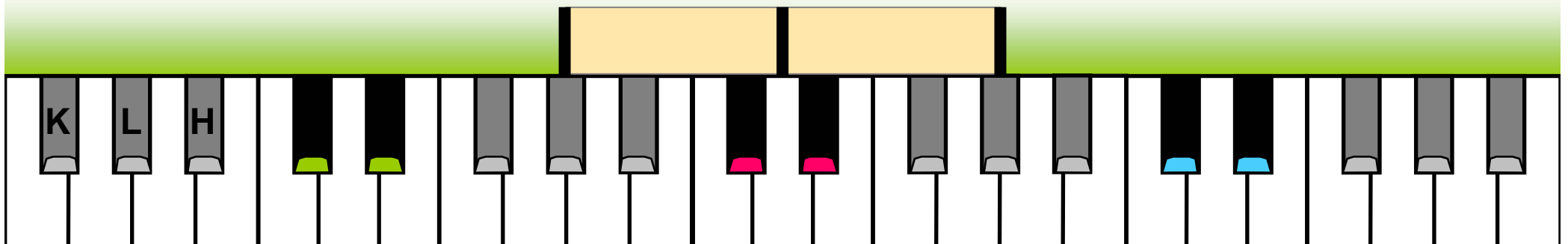
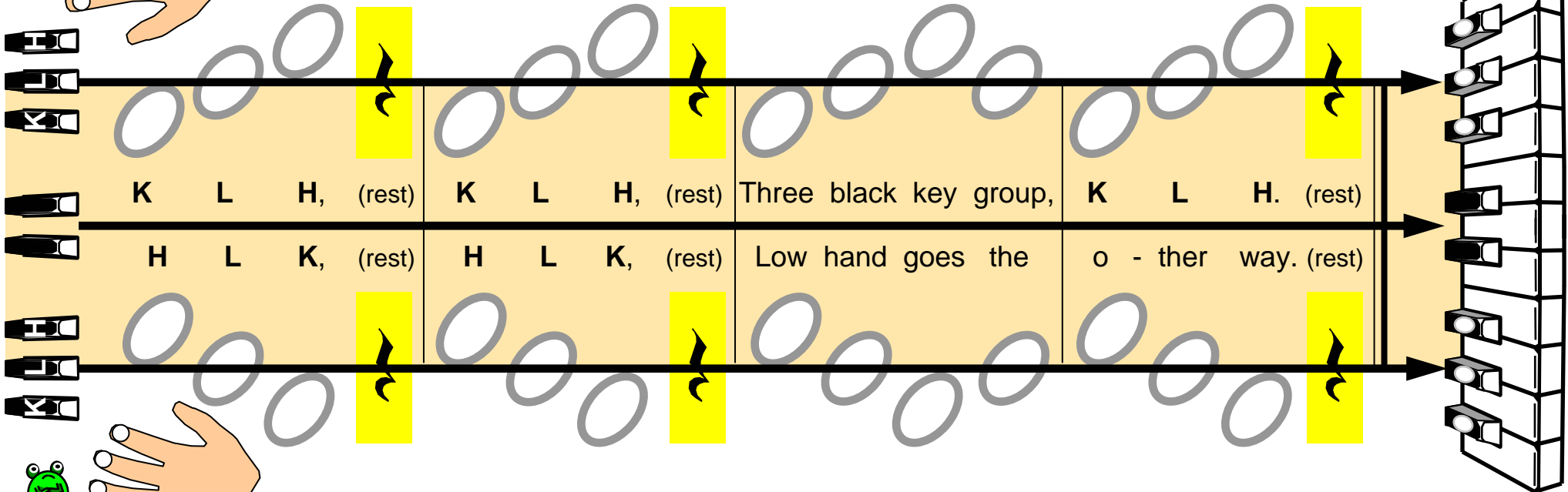
# KLH

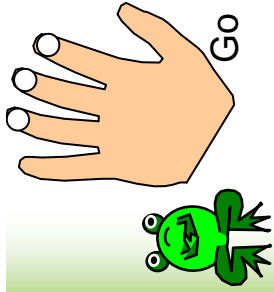


Play this side first.



Hands together: Close or wide, Close or wide, Inside, outside three line guide.





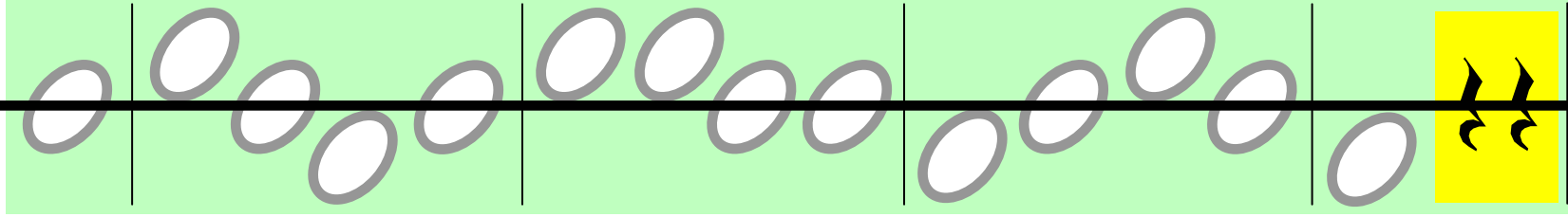
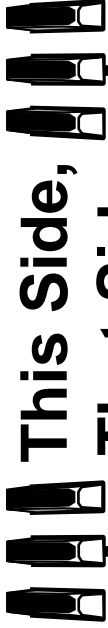
Go

up side, down side, next to line, to-wards the sky or ground.

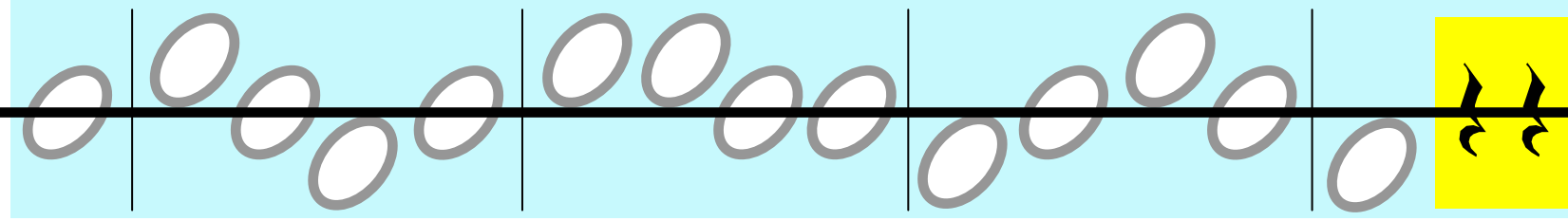
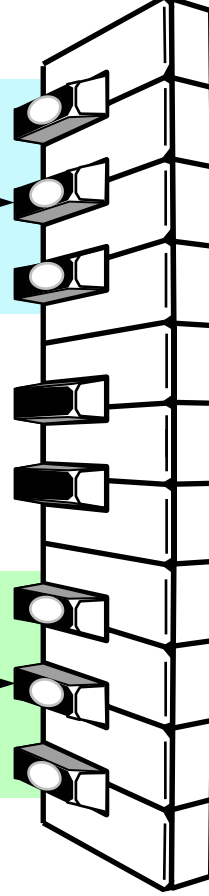


Ground

This Side,  
That Side



centre of  
keyboard



Go this side, that side, of this line. We're step-ping up and down.



Sky





# Two Hands Play

Play each hand separately first.

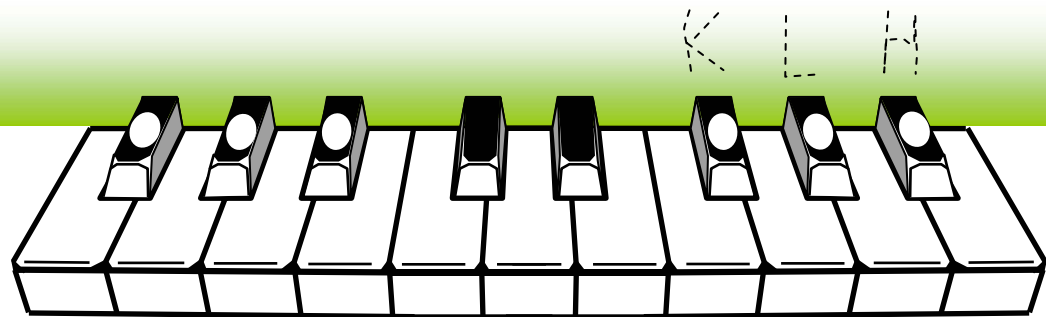
Two hands play, Two hands play, Both to - ge - ther here to - day.

centre of keyboard

(Moving outward and inward)

Teacher's Accompaniment:

Frogs



Birds

# Link Lines

Play this side first.

Link Line

3

These lines are called link lines, These lines for groups of three.

Links are what they point to, The blacks' most fa - mous key.

Link Line

3

centre of keyboard

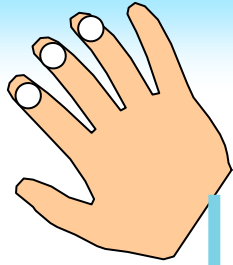
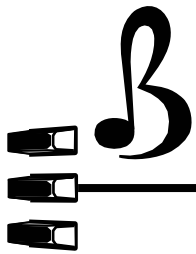
LINK

LINK

Frogs

Birds

# Skip Link Line



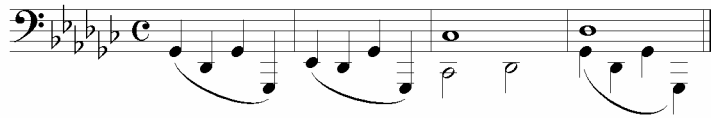
Skip link line,  
Skip a - cross.

Skip link line.  
Skip a - cross.

Both hands skip a - cross,  
Skip one fin - ger, cross link lines.

Repeat

Teacher's Accompaniment:



Link  
Line

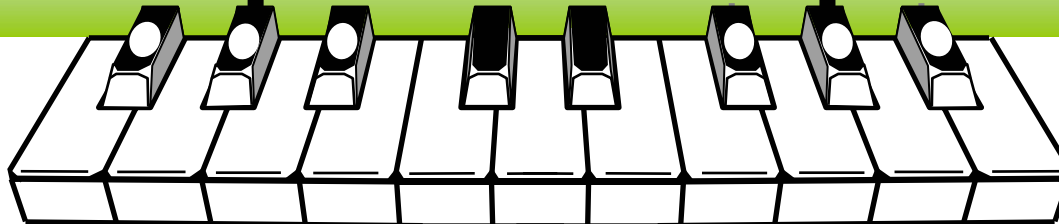
Link  
Line

skip

across

Frogs

Birds



# Same Direction

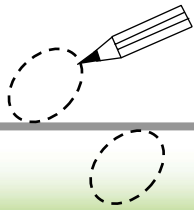
Play hands separately at first.



Diagram of a piano keyboard with notes and fingerings. The top staff (treble clef) has notes G4, A4, B4, C5, D5, E5, F5, G5. The bottom staff (bass clef) has notes G3, F3, E3, D3, C3, B2, A2, G2. Fingerings are indicated by numbers 1-4. Blue stems point up for notes G4, A4, B4, C5, D5, E5, F5, G5. Green stems point down for notes G3, F3, E3, D3, C3, B2, A2, G2. A 'Count' box is on the left with a blank space and a foot icon. A 'Repeat immediately' label is on the right.

Count

Repeat immediately



Teacher's Accompaniment:

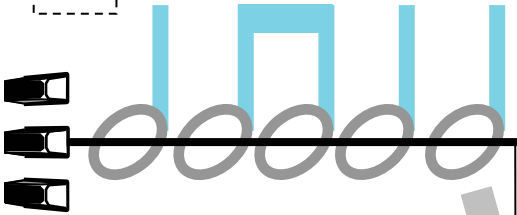
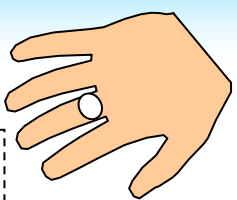
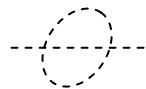
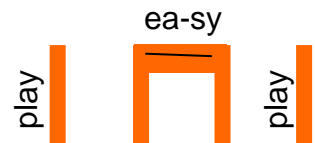
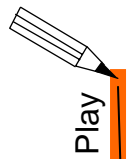
Two staves of musical notation in bass clef, 2/4 time. The first staff has a sequence of quarter notes: G2, F2, E2, D2, C2, B1, A1, G1. The second staff has a sequence of quarter notes: G2, F2, E2, D2, C2, B1, A1, G1.



Diagram of a piano keyboard with arrows indicating finger movement. Above the first three keys (G2, F2, E2), a double-headed arrow is labeled 'DOWN' on the left and 'UP' on the right. Above the last three keys (G2, F2, E2), a double-headed arrow is labeled 'DOWN' on the left and 'UP' on the right.



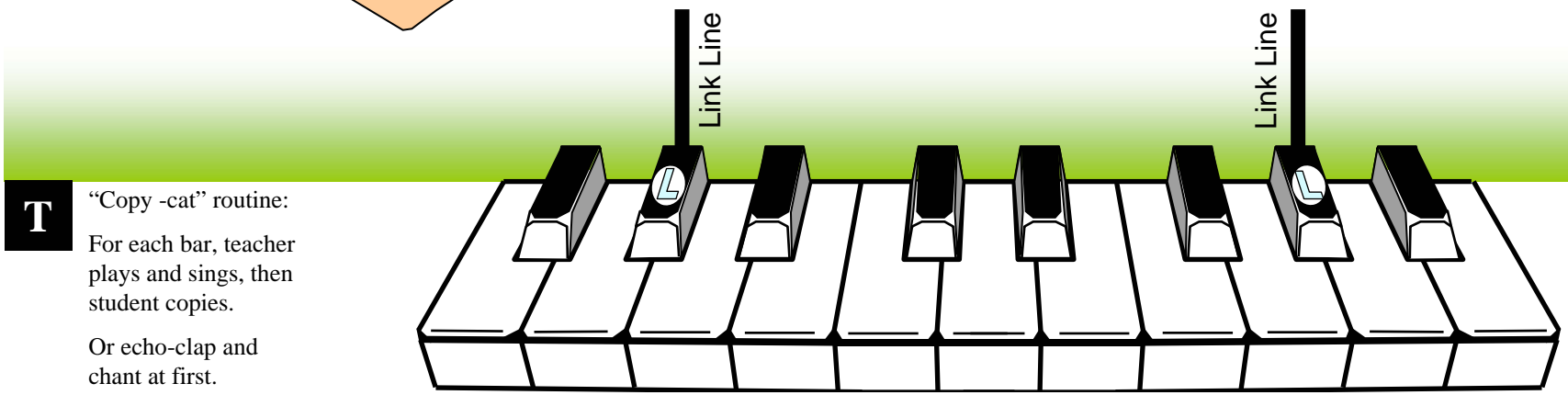
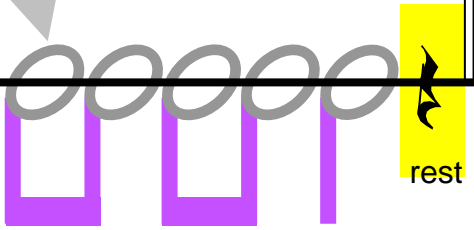
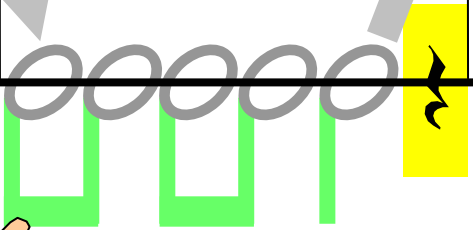
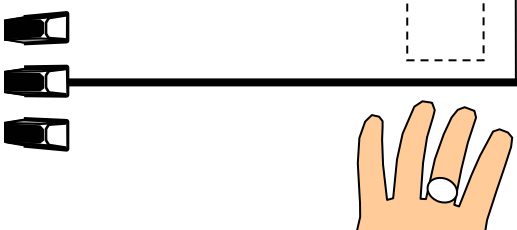
# The Link Lines



Here are the Link Lines, Mid - dle of the threes.

Spe - cial ex - tra keys!

rest



**T** "Copy -cat" routine:  
 For each bar, teacher plays and sings, then student copies.  
 Or echo-clap and chant at first.



# Taking Sides

**high hand**

**low hand**

**centre**

Tied note (hold note on)

Tied note (hold note on)

"I like sun." "And I like rain." "I prefer it hot." "Not me!"

"I like rain." "I prefer it hot." "Not me!"

**centre**

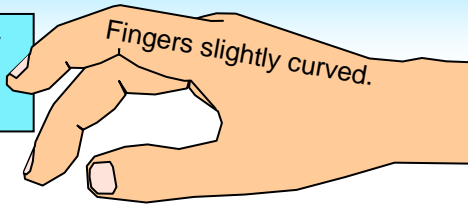
"I like day." "But I like night." "We just don't agree." "That's right!"

"I like night." "We just don't agree." "That's right!"

Teacher's Accompaniment:

# Out in Space

1. Play high hand



1: Out in space I'd love to be, Where there is no gravity.

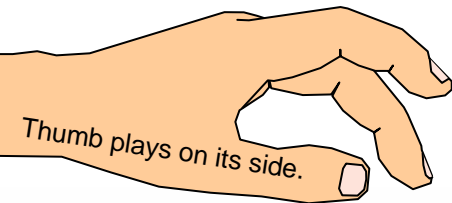


top

middle

bottom

2. Play low hand



2: Naturals next to group of three, At the edge and floating free.



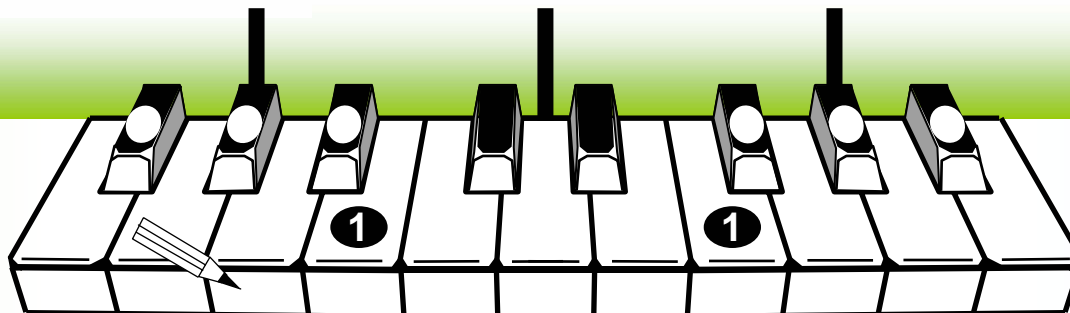
Teacher's Accompaniment:



3. Play both hands together.

3: Play together everyone, Black and white keys having fun.

Frog



Bird

# Notes On This Side

**Birds**

**Frogs**

Notes on this side sound up high.

Notes on this side sound down low.

Tied note (hold note on)

high

centre

low

These notes would be near the sky.

Near the ground these notes should go.

Teacher's Accompaniment:

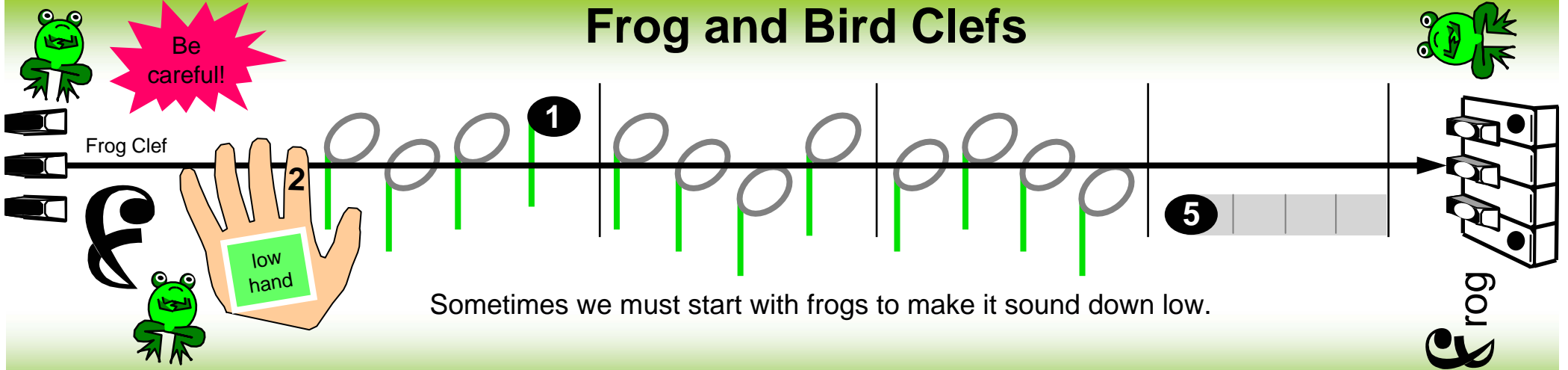
K L H Find the keys by feel.





# Frog and Bird Clefs

Be careful!



Frog Clef

low hand

1

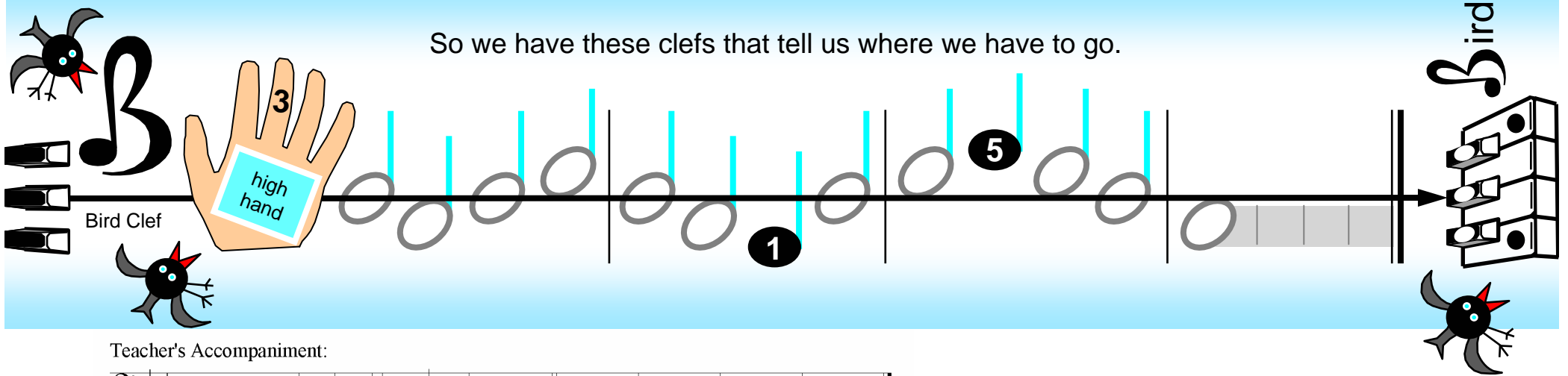
2

5

Sometimes we must start with frogs to make it sound down low.

Frog

This diagram illustrates the Frog Clef. On the left, a green frog is shown above a piano keyboard. A pink starburst contains the text "Be careful!". Below the keyboard, a hand is shown with the number "2" on the index finger and a green box labeled "low hand". To the right, a musical staff with a treble clef has a series of notes: a whole note on G4, a half note on F4, a quarter note on E4, a quarter note on D4, a quarter note on C4, a quarter note on B3, a quarter note on A3, a quarter note on G3, a quarter note on F3, a quarter note on E3, a quarter note on D3, and a quarter note on C3. A circled "1" is above the first note, and a circled "5" is above the last note. On the right, a piano keyboard is shown with a frog sitting on it, and the word "Frog" is written vertically next to it.



Bird Clef

high hand

3

1

5

So we have these clefs that tell us where we have to go.

Bird

This diagram illustrates the Bird Clef. On the left, a black bird is shown above a piano keyboard. A hand is shown with the number "3" on the middle finger and a blue box labeled "high hand". To the right, a musical staff with a bass clef has a series of notes: a whole note on G2, a half note on A2, a quarter note on B2, a quarter note on C3, a quarter note on D3, a quarter note on E3, a quarter note on F3, a quarter note on G3, a quarter note on A3, a quarter note on B3, a quarter note on C4, a quarter note on B3, a quarter note on A3, a quarter note on G3, a quarter note on F3, a quarter note on E3, a quarter note on D3, and a quarter note on C3. A circled "1" is above the first note, and a circled "5" is above the last note. On the right, a piano keyboard is shown with a bird sitting on it, and the word "Bird" is written vertically next to it.

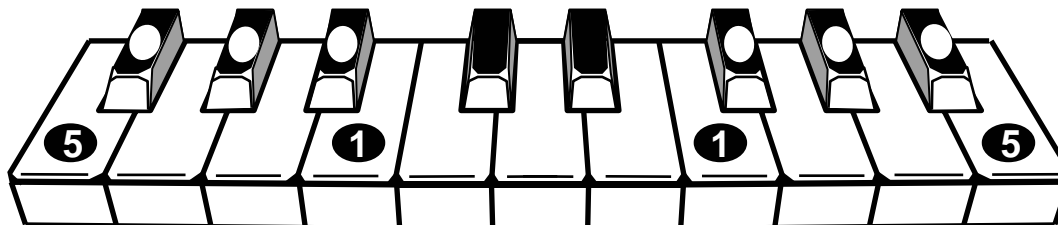
Teacher's Accompaniment:



A musical staff in bass clef with a key signature of three flats (B-flat, E-flat, A-flat) and a common time signature. The melody consists of the following notes: G2, A2, B2, C3, D3, E3, F3, G3, A3, B3, C4, B3, A3, G3, F3, E3, D3, C3.



Frogs

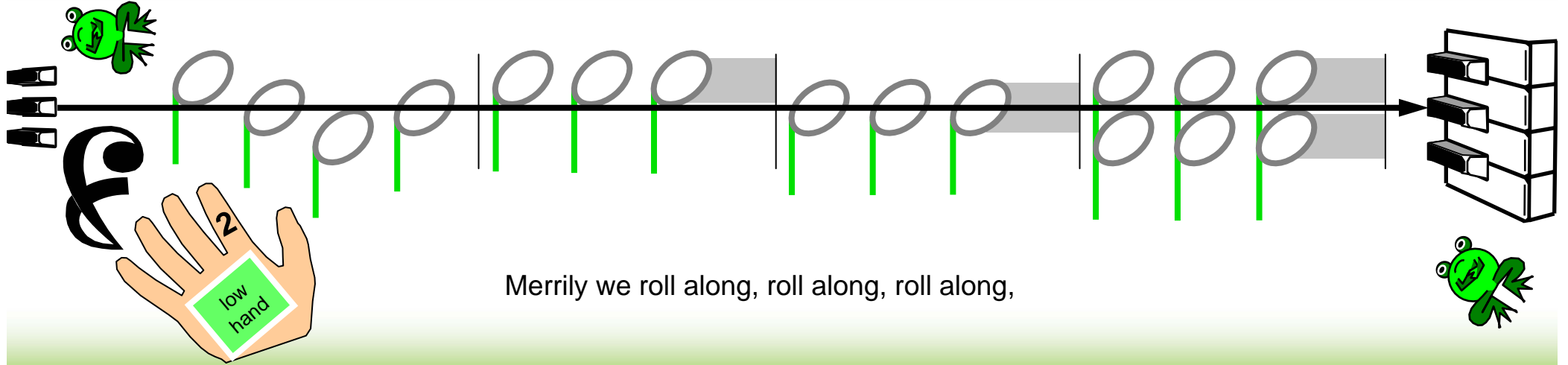


A diagram of a piano keyboard showing the first eight keys. The keys are labeled with finger numbers: 5 for the first white key (C3), 1 for the first black key (B2), 1 for the second white key (C3), and 5 for the eighth white key (G3).

Birds

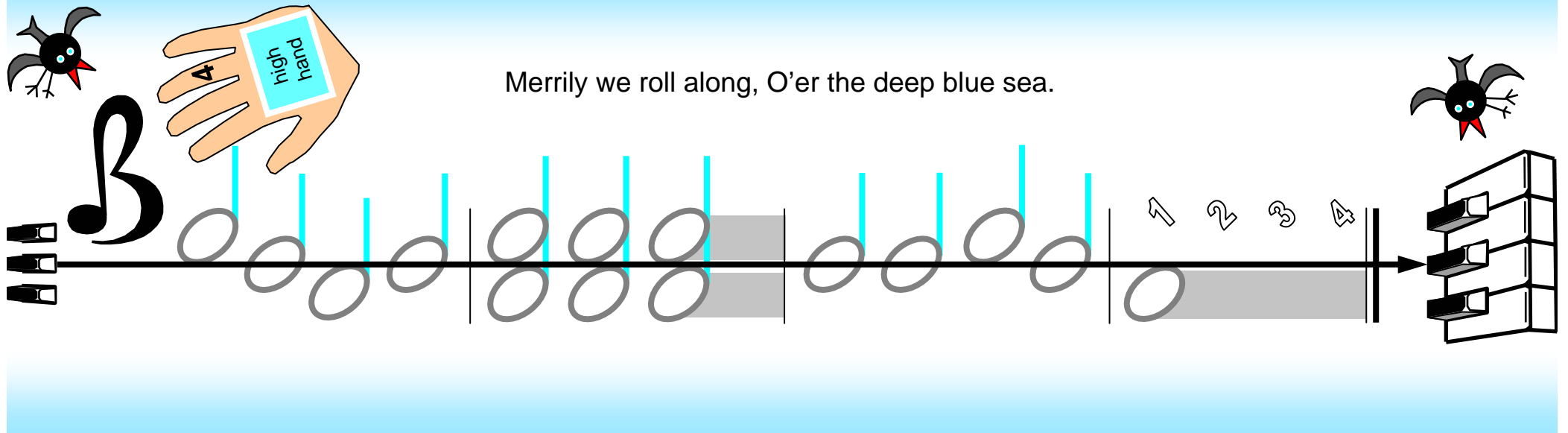


# Merrily We Roll Along



Merrily we roll along, roll along, roll along,

This section illustrates the first part of the song. It features a musical staff with a treble clef and a key signature of one flat. The melody is represented by a series of notes on a five-line staff, with green stems and oval note heads. A hand icon labeled 'low hand' with the number '2' is shown, indicating the starting position. A green frog is depicted at the top left and bottom right. A keyboard icon is shown on the right side.



Merrily we roll along, O'er the deep blue sea.

This section illustrates the second part of the song. It features a musical staff with a treble clef and a key signature of one flat. The melody is represented by a series of notes on a five-line staff, with blue stems and oval note heads. A hand icon labeled 'high hand' with the number '4' is shown, indicating the starting position. A bat is depicted at the top left and bottom right. A keyboard icon is shown on the right side.

Teacher's Accompaniment:

