

New April 2019

C Position

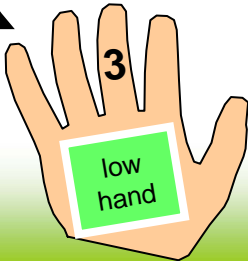
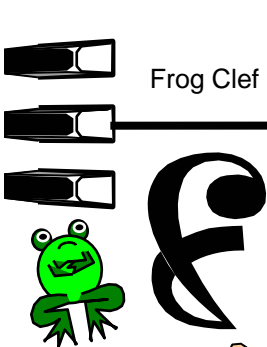
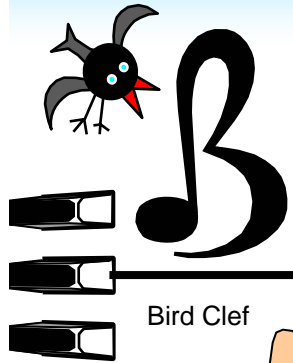
Play five finger exercise in C position now.

The diagram shows a grand staff with four measures. The right hand (treble clef) starts with a C-clef on the first line, labeled 'high hand' with a blue box. The left hand (bass clef) starts with a C-clef on the fourth line, labeled 'low hand' with a green box. A cat icon points to the middle C (C4) between the two staves, labeled 'middle C (Cat)'. The exercise consists of a five-finger scale in the right hand (C4 to G4) and a five-finger scale in the left hand (C3 to G2). Fingerings are indicated by numbers 1-5. A vertical color-coded legend on the left shows G (orange), F (green), E (yellow), C (white), B (purple), and A (red).

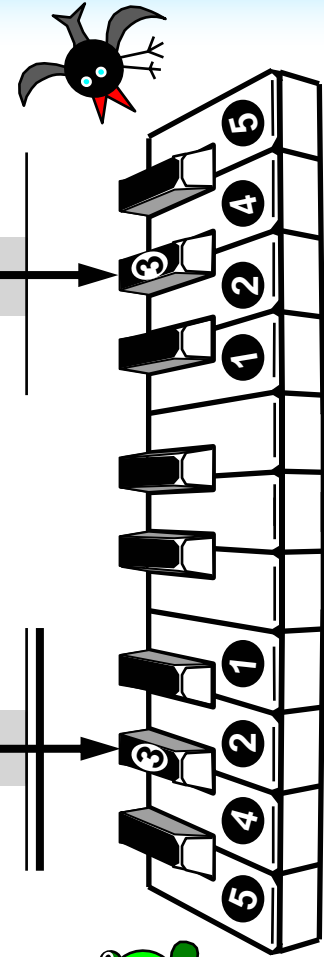
The diagram shows a grand staff with four measures. The right hand (treble clef) starts with a C-clef on the first line, labeled '5'. The left hand (bass clef) starts with a C-clef on the fourth line, labeled '1'. The exercise consists of a five-finger scale in the right hand (C4 to G4) and a five-finger scale in the left hand (C3 to G2). Fingerings are indicated by numbers 1-5.

Playing in the C position, let me show you how.

Naturals (♮) Above and Below



Naturals above, and naturals below.
 Two on each side, that's four in a row.
 (tog) We always know which way we will go.



Frogs

Birds



White Keys Were Invented First

Be careful!

Frog Clef

low hand

These white keys were invented first. Then they added blacks.

Frog

This section features a musical staff with notes and fingerings (1, 2, 3) for the low hand. It includes a 'Frog Clef' symbol, a hand diagram labeled 'low hand', and a keyboard diagram with a 'Frog' label. A pink starburst contains the text 'Be careful!'.

Bird Clef

high hand

These white keys are called naturals and these extras sharps and flats.

Bird

This section features a musical staff with notes and fingerings (1, 2) for the high hand. It includes a 'Bird Clef' symbol, a hand diagram labeled 'high hand', and a keyboard diagram with a 'Bird' label.

sharps (\sharp) and flats (\flat)

naturals (\natural)

Frogs

Birds

This section shows a keyboard diagram with labels for 'sharps', 'naturals', and 'flats'. It includes 'Frogs' and 'Birds' labels and illustrations of a frog and a bird.

White Keys CDE

low hand

2

bass

D

In the middle of the alphabet, Lives the letter D,
And above is letter E and below is letter C.

E

C

A B C D E F G

What Music Experts Say

A musical staff with a treble clef. A green frog is perched on the staff. A hand with the number '3' and the text 'low hand' is shown. The staff contains several notes: some are on the lines (G, E, C) and some are between lines (F, D, B). A yellow lightning bolt is on the right. A keyboard is shown on the far right.

Here's what music experts say.

Notes that touch a line are fine.

A musical staff with a bass clef. The staff contains several notes: some are on the spaces (A, C, E, G) and some are on the lines (B, D, F). A yellow lightning bolt is on the right. A keyboard is shown on the far right.

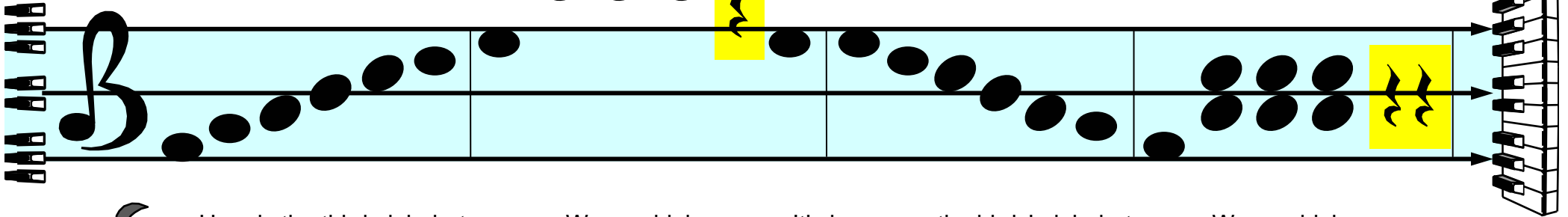
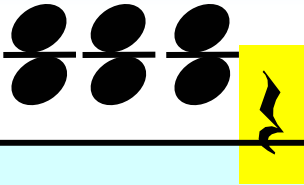
But where notes are moved away,

There should be another line.

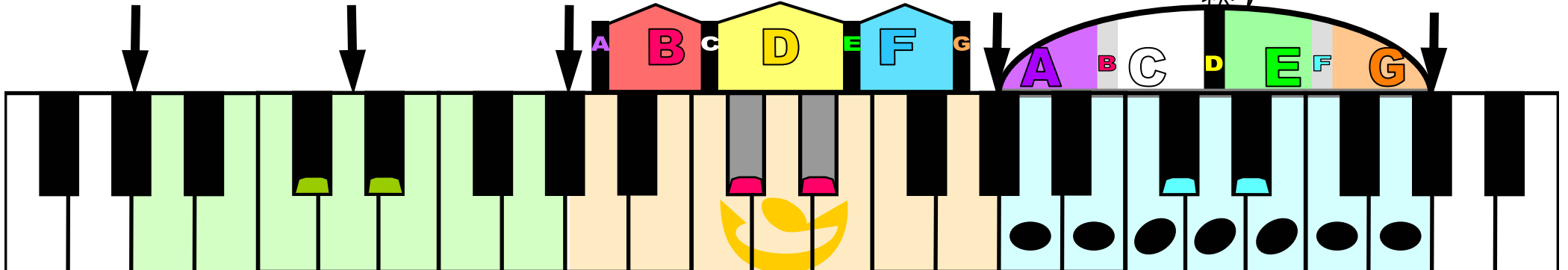
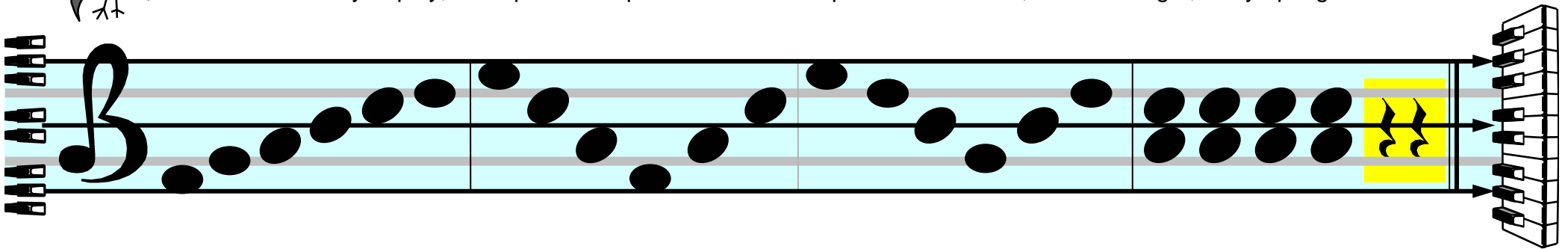
'Basic' Alphabet

A keyboard with frog icons on the left and bird icons on the right. The keys are color-coded: green for 'Frogs', orange for 'Basic', and light blue for 'Birds'. Letters A, B, F, G, and A are written on the keys. A pencil is shown writing on a key.

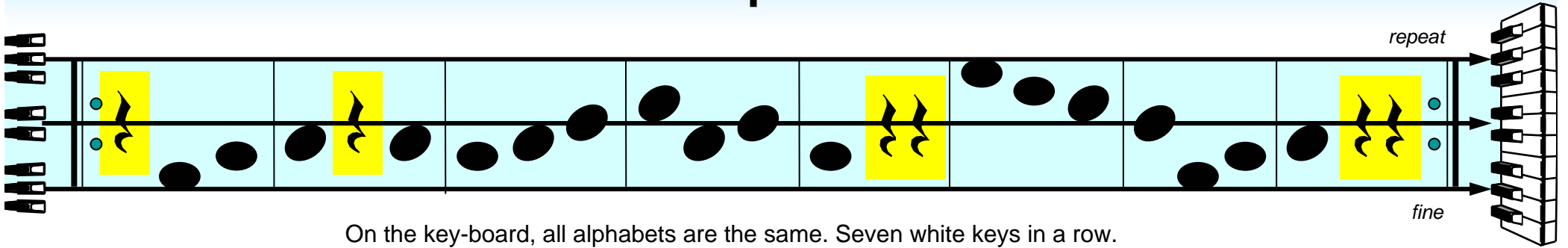
The Birds' Alphabet



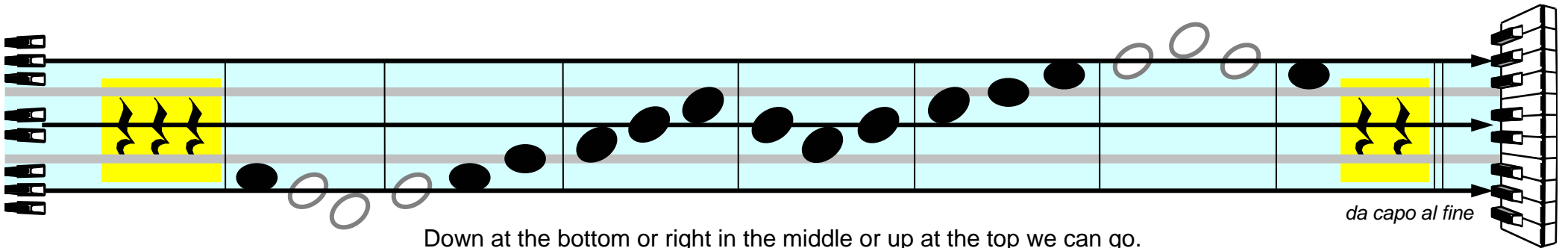
Here is the third alphabet, Way up high. It's known as the birds' alphabet, Way up high.
 Here is the way to play, Skip on four space notes then skip on three lines, don't for - get, Way up high.



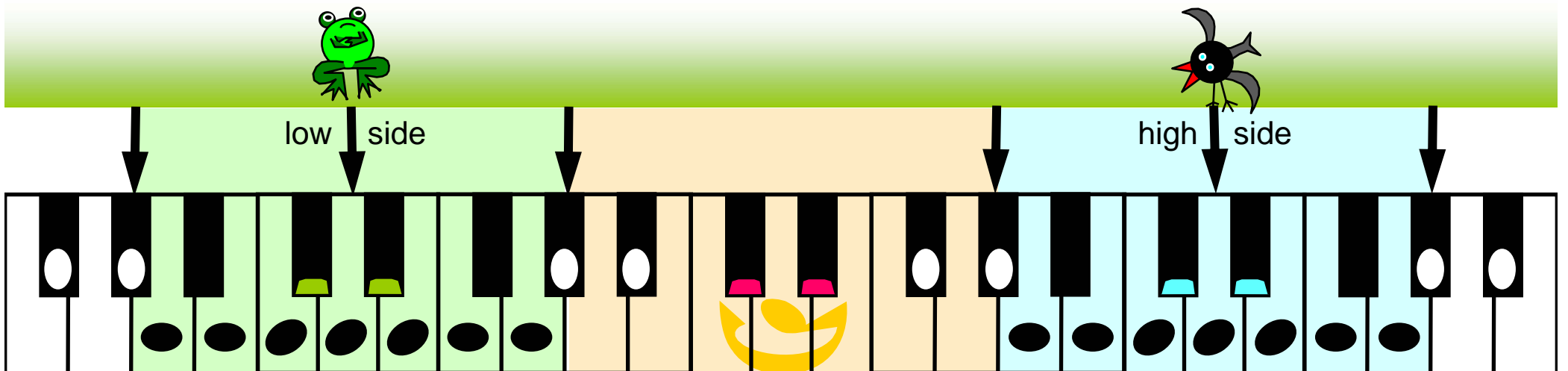
All Alphabets



On the key-board, all alphabets are the same. Seven white keys in a row.
And Express Staves also are always the same. That's all that you need to know.

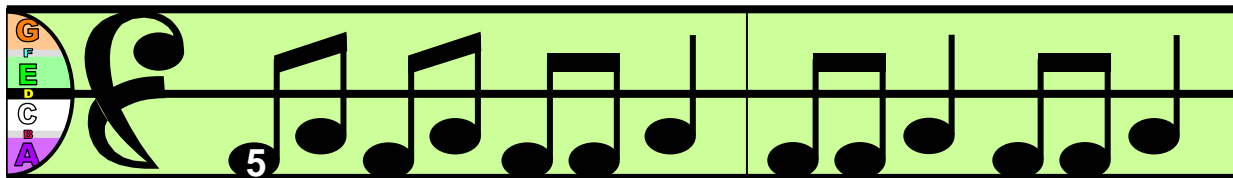


Down at the bottom or right in the middle or up at the top we can go.
On the key-board, all alphabets are the same. Seven white keys in a row.

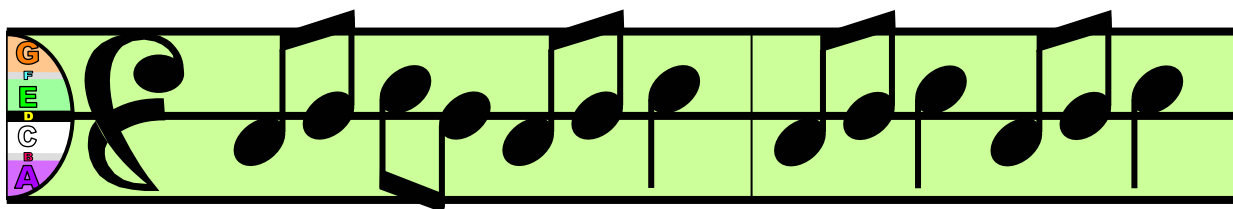




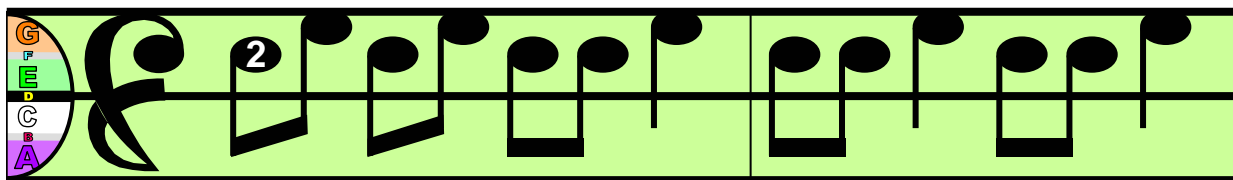
Music Alphabet



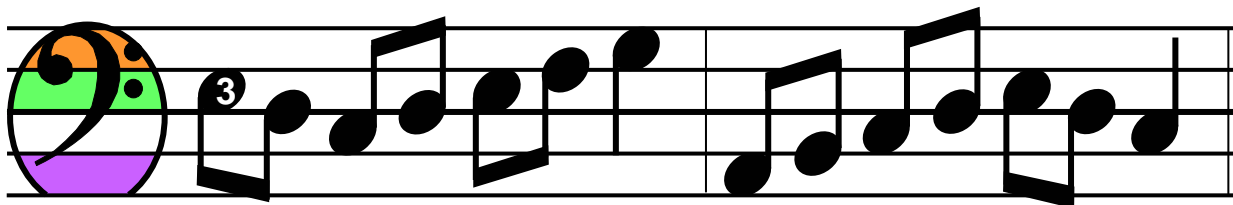
First two notes in al - pha - bet, A and B, A and B.



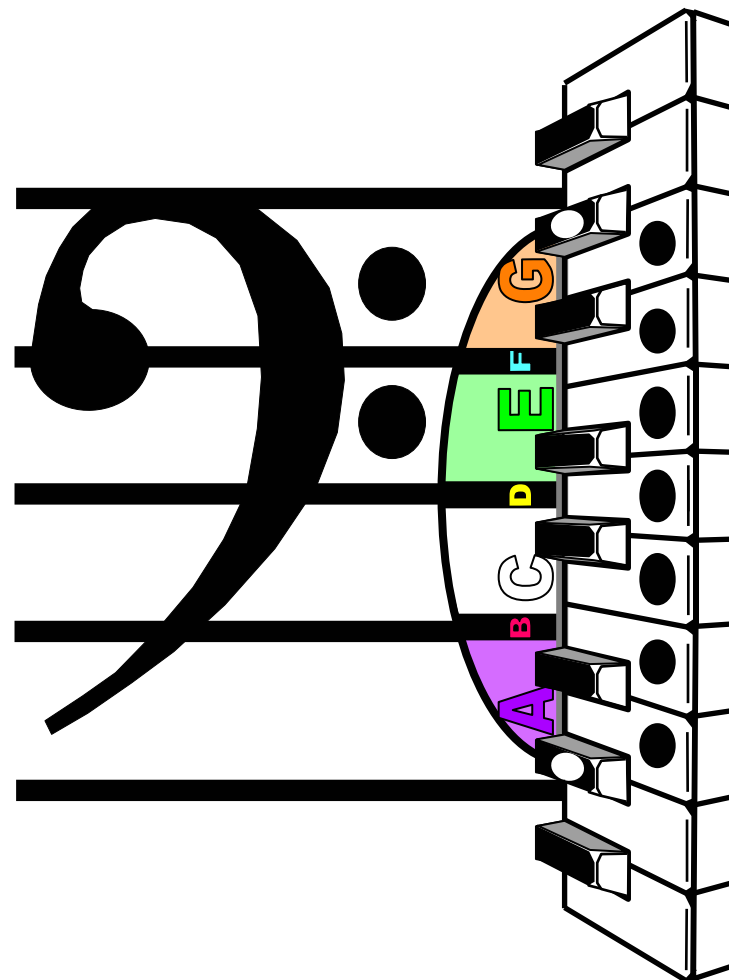
Mid - dle notes in al - pha - bet, C, D, E. C, D, E.



Top two notes in al - pha - bet, F and G, F and G.

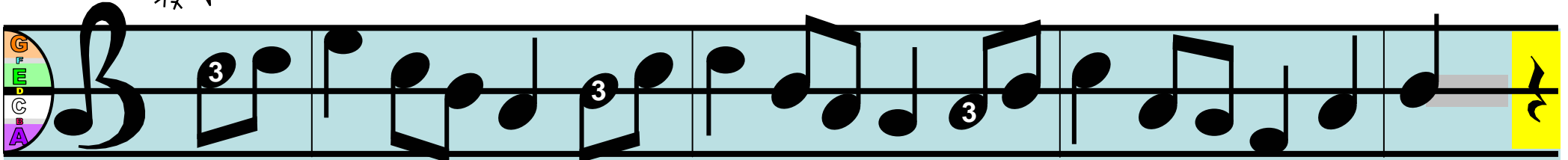


Se - ven let - ters, don't for - get, That's the mu - sic al - pha - bet.

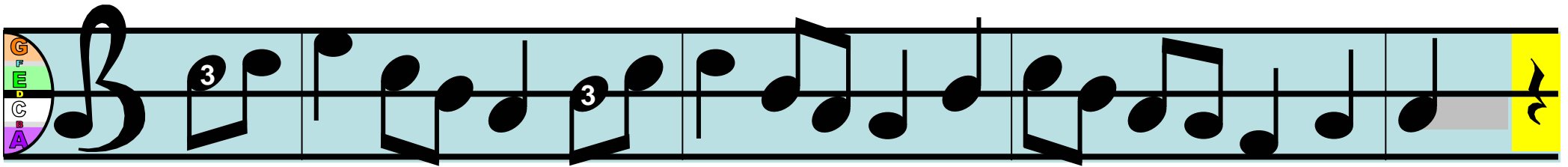




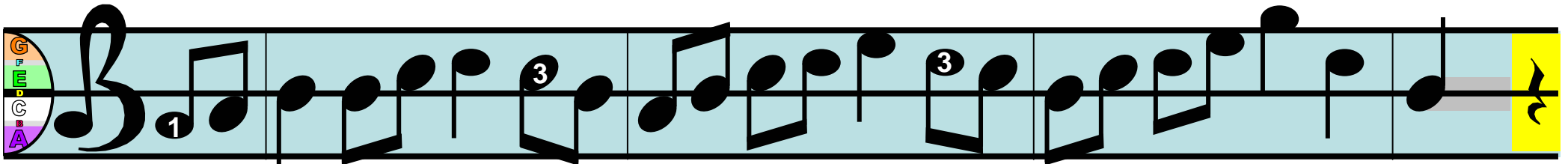
Bird, Third, Treble



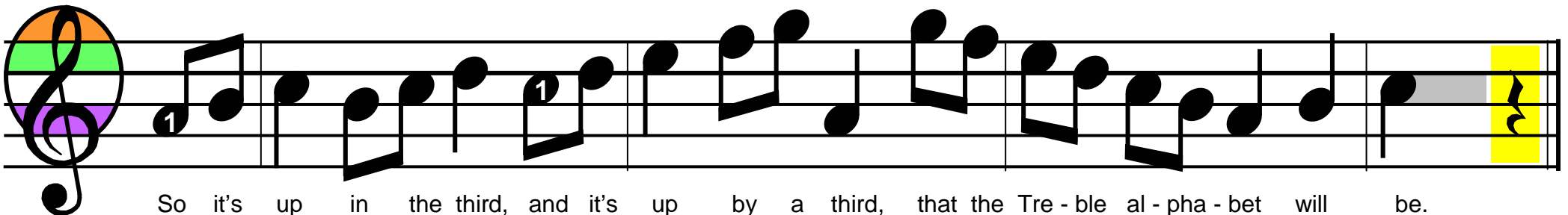
And the Bird al - pha - bet, is the third al - pha - bet, And the word Tre - ble means 'times three'.



So the word, don't for - get, for this third al - pha - bet, is Tre - ble coz it means times three.

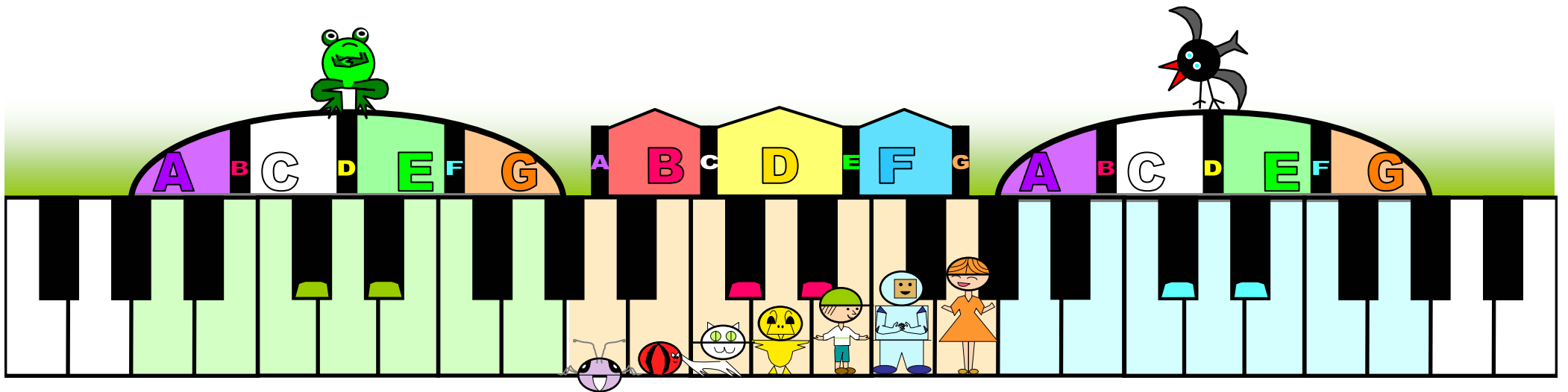
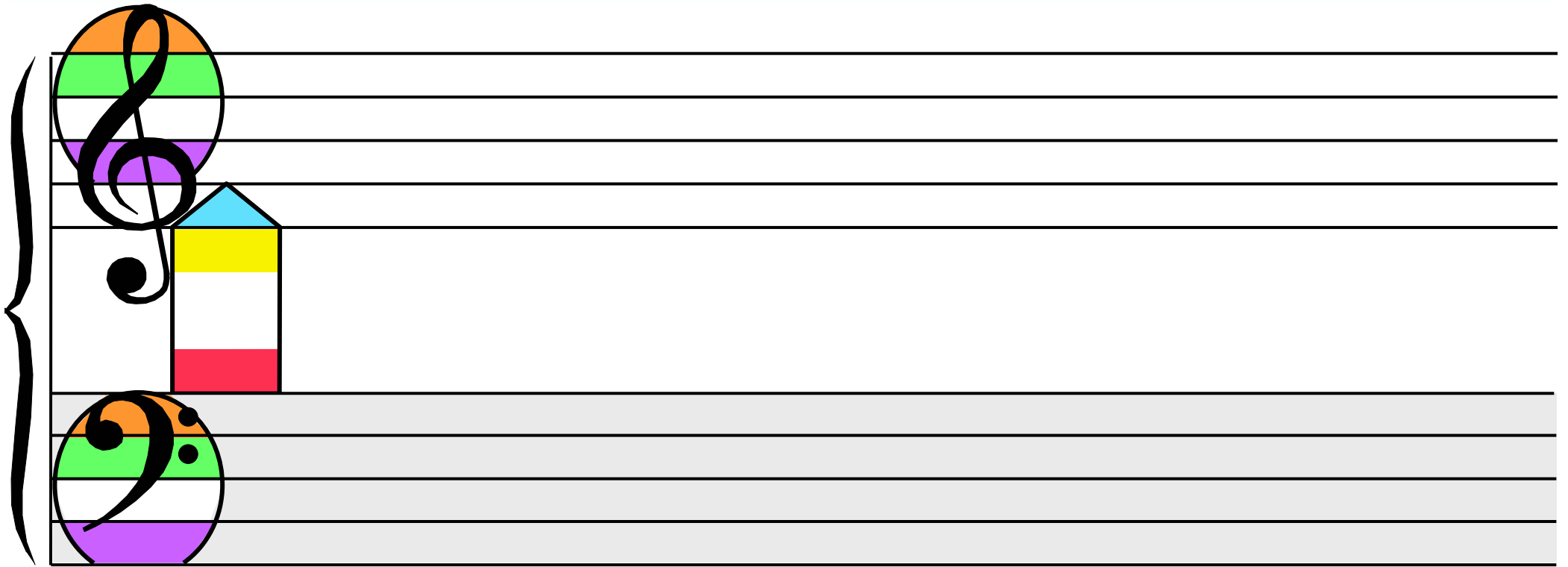


But a mix - up oc-curred that the mean-ing of the word was the dis-tance of the third de - gree,

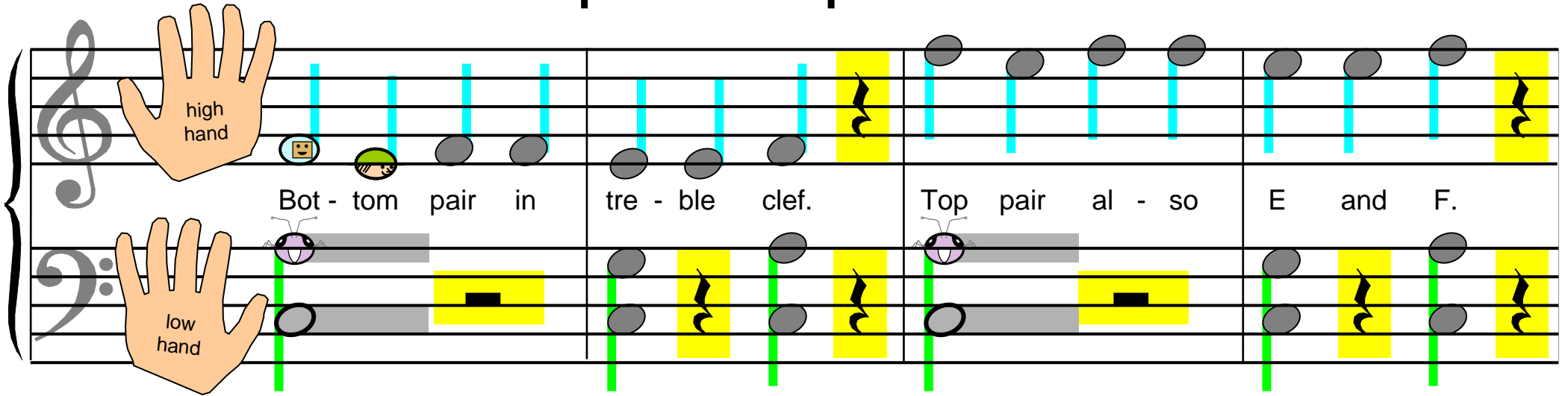


So it's up in the third, and it's up by a third, that the Tre - ble al - pha - bet will be.

Three Alphabets



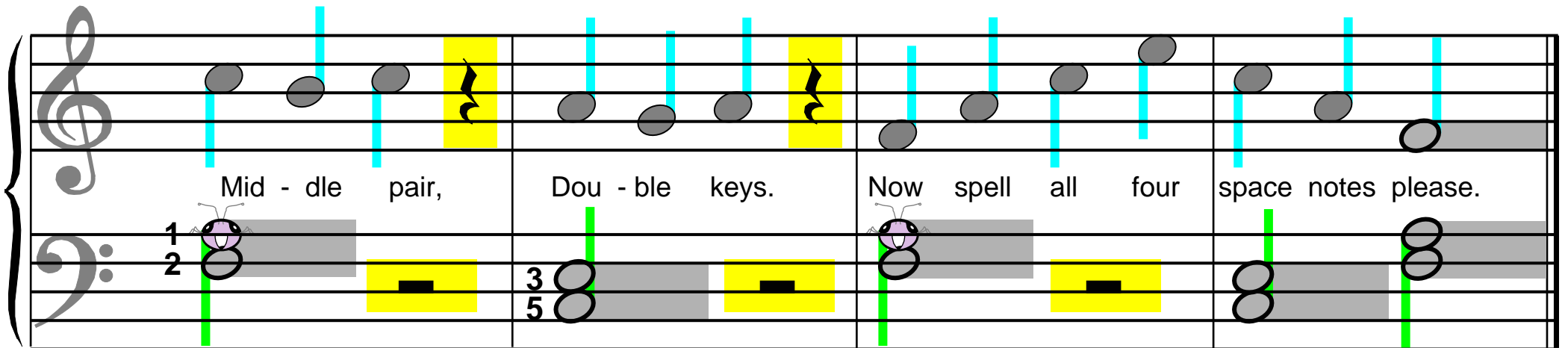
Spell Four Space Notes



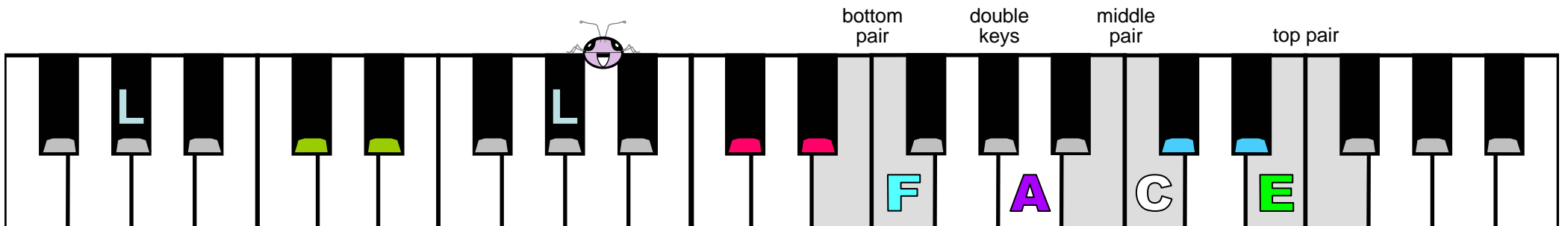
high hand

low hand

Bot - tom pair in tre - ble clef. Top pair al - so E and F.



Mid - dle pair, Dou - ble keys. Now spell all four space notes please.



bottom pair

double keys

middle pair

top pair

F A C E

Outside and Inside

4

4

3

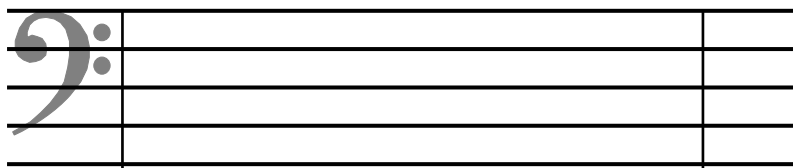
Out-side or in - side or out-side the stave. Some are pro - tec - ted but o - thers are brave.

Out-side or in - side or out-side the stave. Some are pro - tec - ted but o - thers are brave.

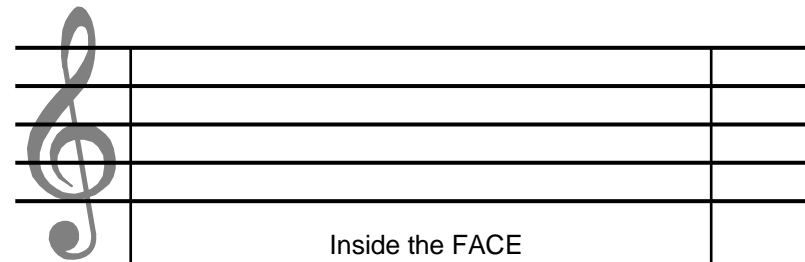
4

4

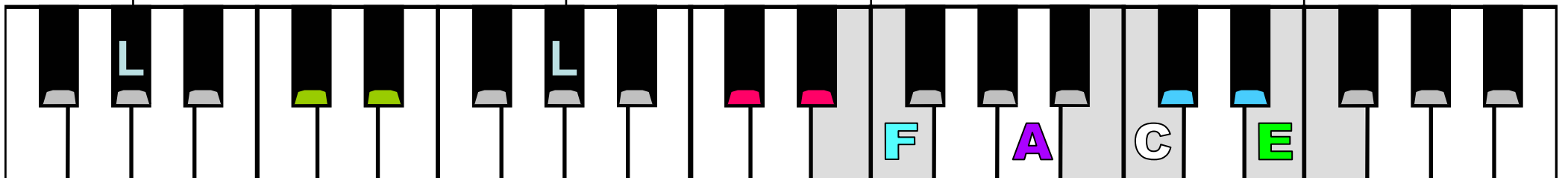
3



Inside the bass



Inside the FACE



Skip To My Lou

3 Skip on line notes in a row. Change to space notes, here we go. 2

3 Swing your part - ner to and fro, 2 Skip to my Lou my dar - ling.

This system shows the first four measures of the piece. The treble clef staff contains the melody with notes highlighted in cyan. The first measure has a '3' above it and a smiley face emoji below it. The second measure has a '2' above it and a sad face emoji below it. The third measure has a '3' above it. The fourth measure has a '2' above it. The bass clef staff shows the accompaniment with notes on the bottom line and middle line, highlighted in yellow. Green vertical lines indicate the starting point for each measure.

3 Skip on space notes in a row. Change to line notes, here we go. 2

3 Swing your part - ner to and fro, 2 Skip to my Lou my dar - ling.

This system shows the next four measures. The treble clef staff contains the melody with notes highlighted in cyan. The first measure has a '3' above it. The second measure has a '2' above it. The third measure has a '3' above it. The fourth measure has a '2' above it. The bass clef staff shows the accompaniment with notes on the bottom line and middle line, highlighted in yellow. Green vertical lines indicate the starting point for each measure.

bottom pair top pair

The keyboard diagram shows the fingerings for the piece. The left hand (bottom pair) plays the bass line, and the right hand (top pair) plays the treble line. The notes are color-coded: green for the first measure, yellow for the second, pink for the third, and blue for the fourth. A smiley face emoji is placed on the C4 key in the bottom pair.